



# Why No-Till Planter Settings Will Make or Break Your Crop

Gregg Sauder



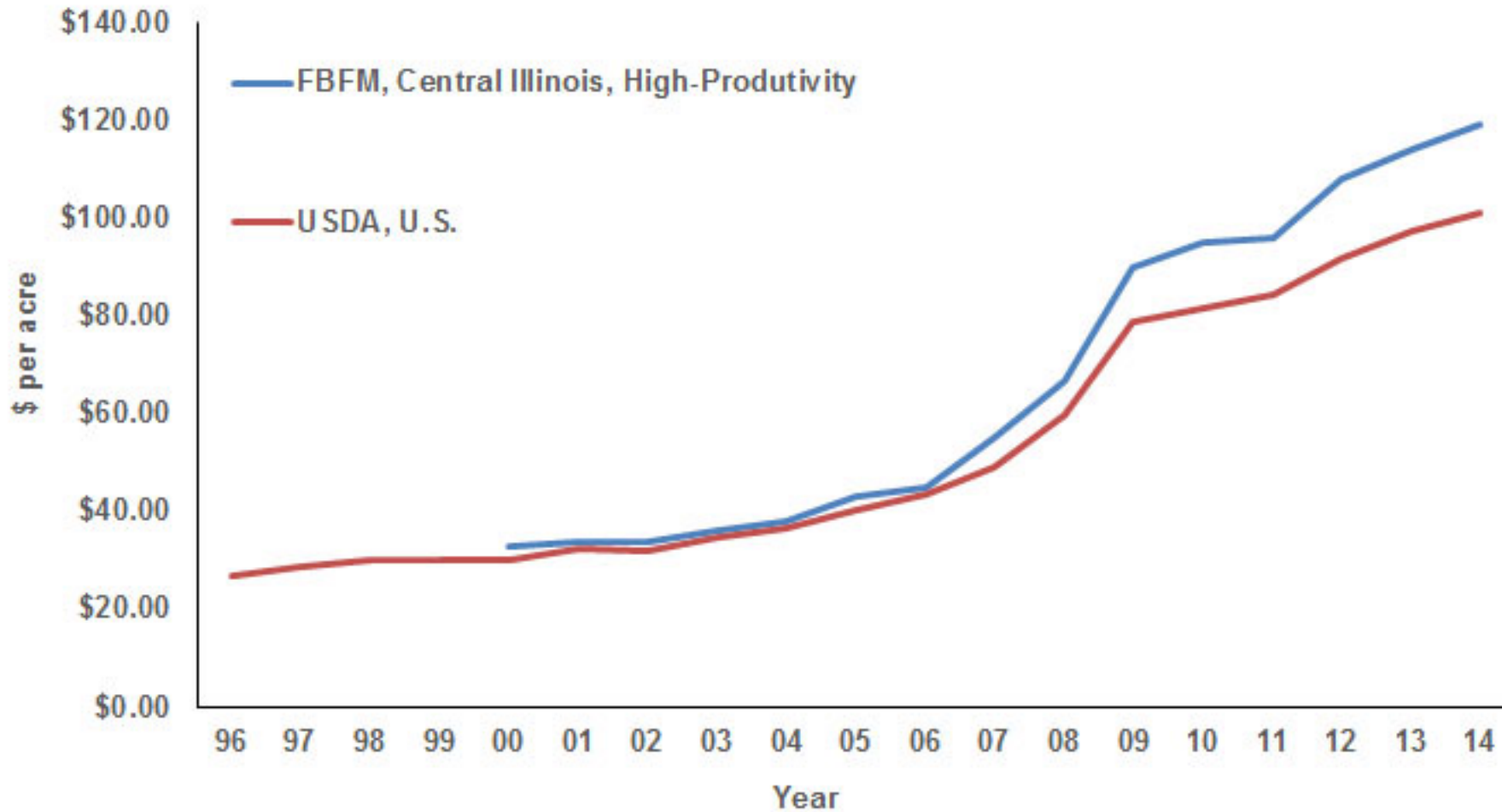




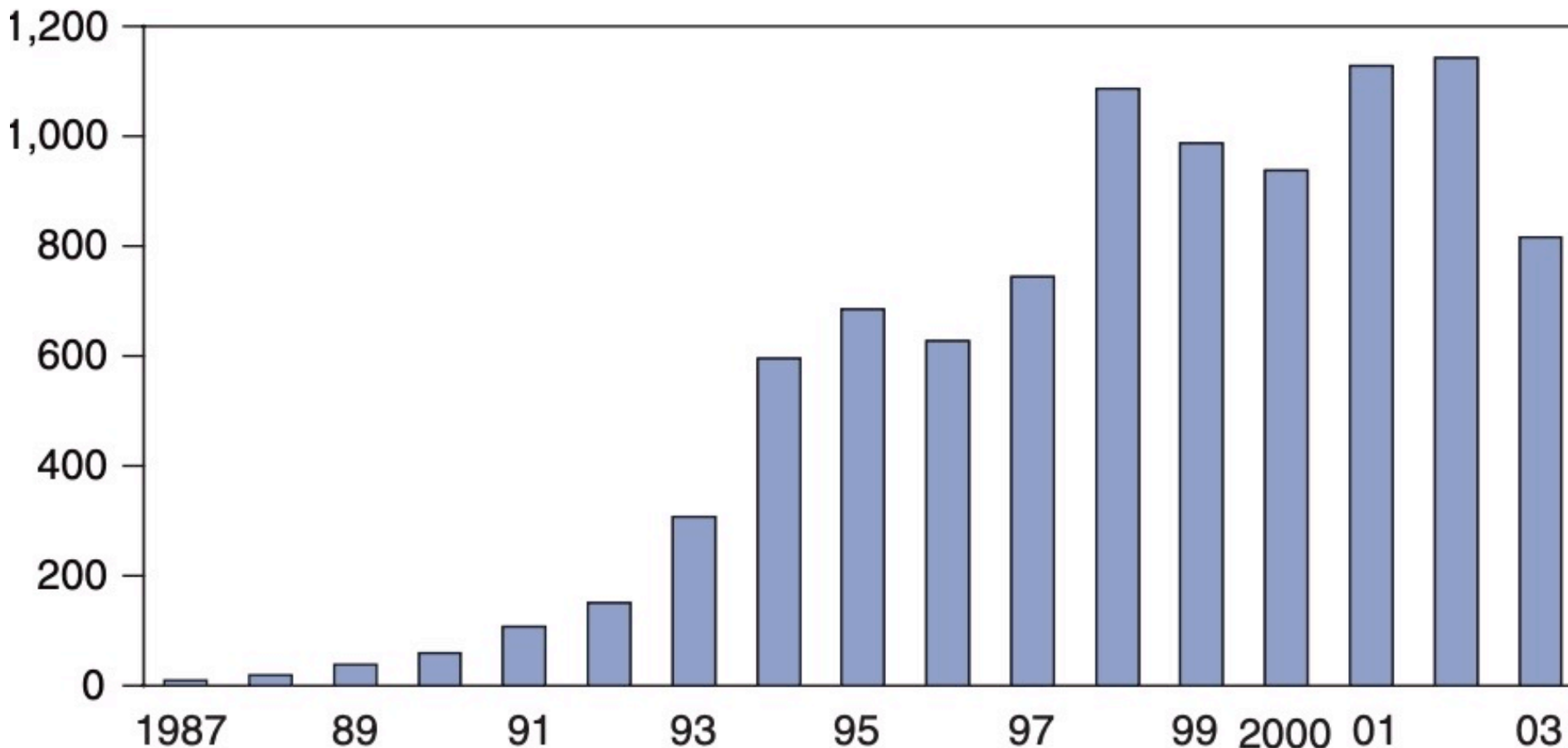


NOBELL  
**FARMER**

# Figure 1. Seed Costs per Acre



# Permits for release of GE varieties approved by APHIS



Source: Virginia Polytechnic Institute and State University, 2005.



31<sup>st</sup> Annual  
NATIONAL  
NO-TILLAGE  
CONFERENCE

January 10-13, 2023 • St. Louis, Mo.



**Ag Leader**



Precision  
Planting



**The Andersons**



**Sound**



MidWest  
Bio-Tech



**wearparts**  
TILLAGE TOOLS

Cultivating Solutions for Growth  
**DAWN**





### 20/20 SeedSense

Population: 0.0	Singulation: 0.0%	Seed Rate: 5.0	Plant Area: 3.6
Not Planting			
Down Force Average: 32.0	Down Force High: 32.4	Down Force Low: 31.9	Down Force Range: 0.5
Ground Contact: 100%	153 Bx	15.4	11

Precision Planting

### 20/20 SeedSense

Population: 32.0	Singulation: 99.7%	Seed Rate: 4.3	Plant Area: 3.6
Down Force Average: 32.4	Down Force High: 32.4	Down Force Low: 31.9	Down Force Range: 0.5
Ground Contact: 100%	153 Bx	15.4	11

Precision Planting

Field map display showing green and yellow areas on a grid, with various control icons and data points.

### John Deere

8:26 PM 2484.3' 08

4.0	7.3
7.3	4.3
87944	87944

1780 RPM

8.40 MPH

85.2 RPM

Field map display with a yellow and green color scheme, showing a grid and various control icons.





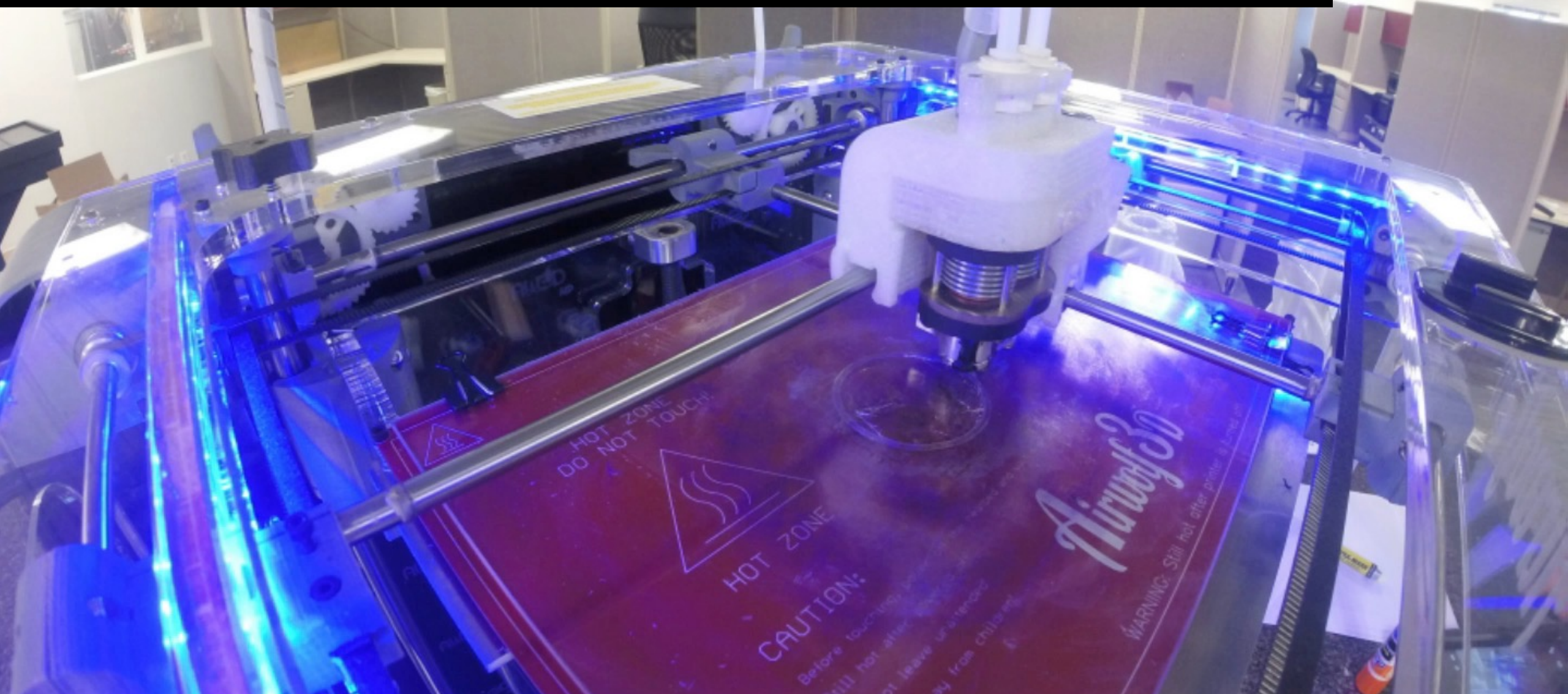


Think like a **farmer.**



Understand the **problem**

He who **tries** the most things wins.





1 good **test** = 1000 good opinions





Trust your **team**



**Think like a corn plant.**





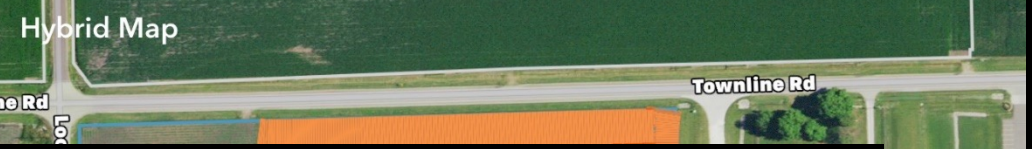
Understand the **problem**



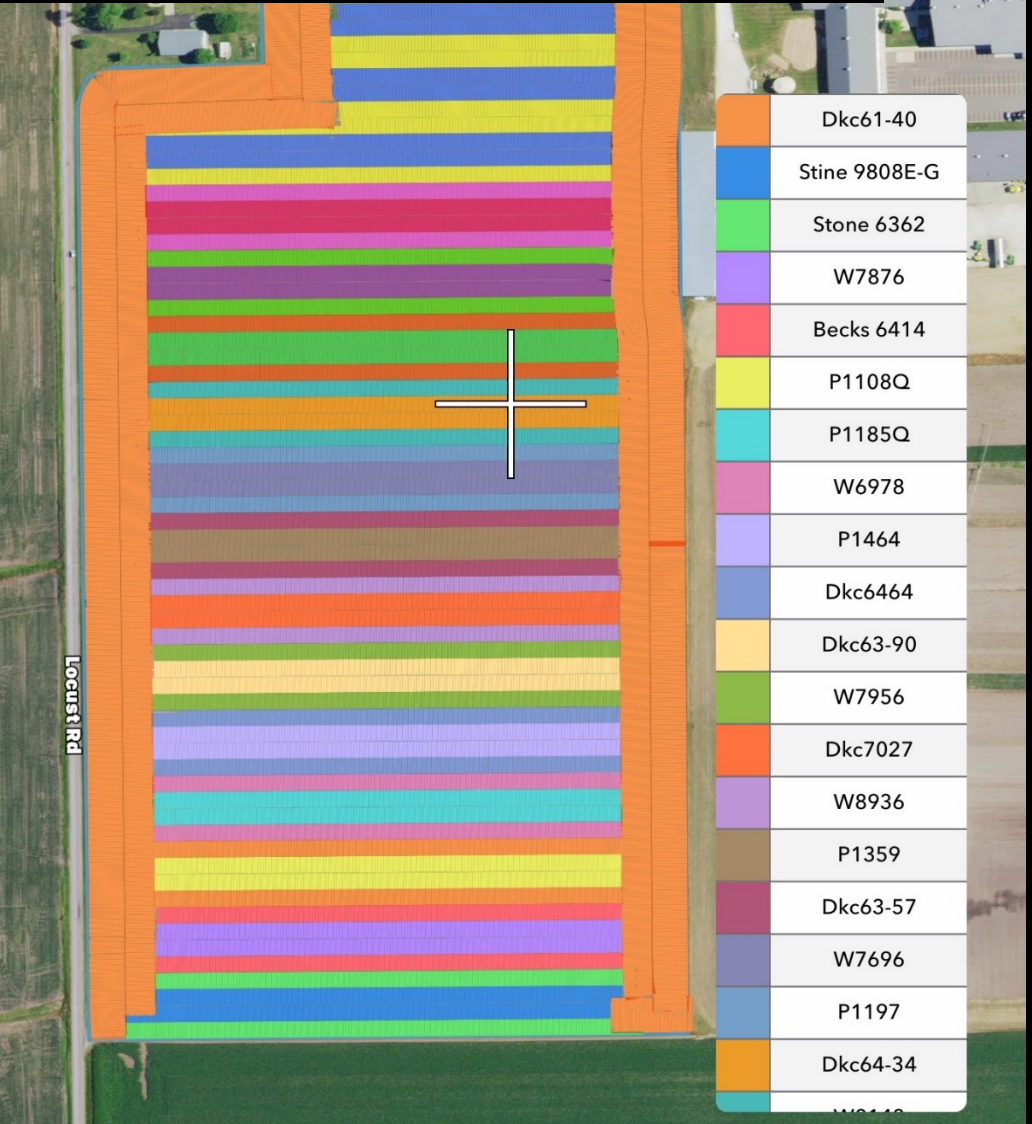
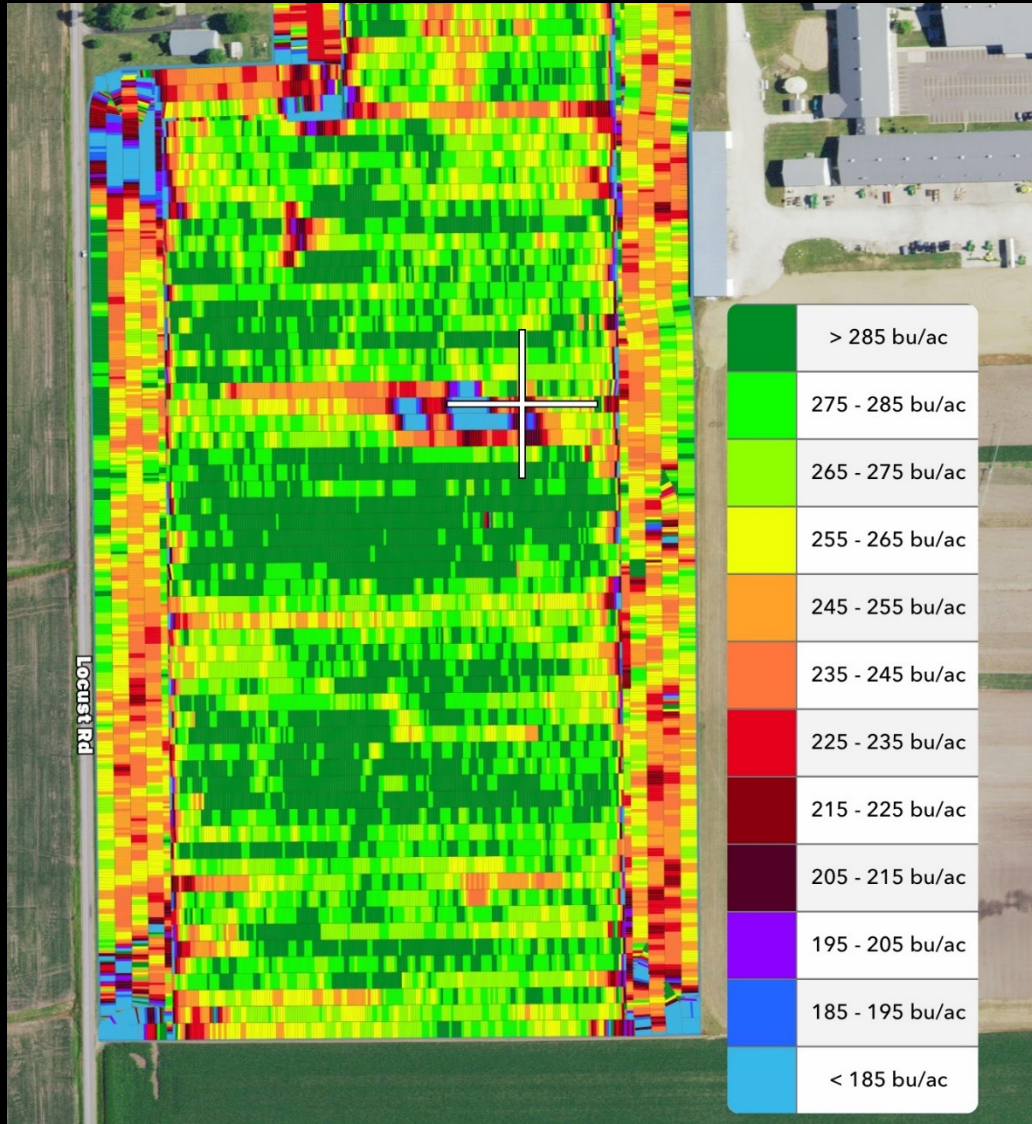
8000 Helen  
2020  
Yield Map  
Locust Rd



Hybrid Map



# He who **tries** the most things wins.





1 good **test** = 1000 good opinions





Trust your **team**









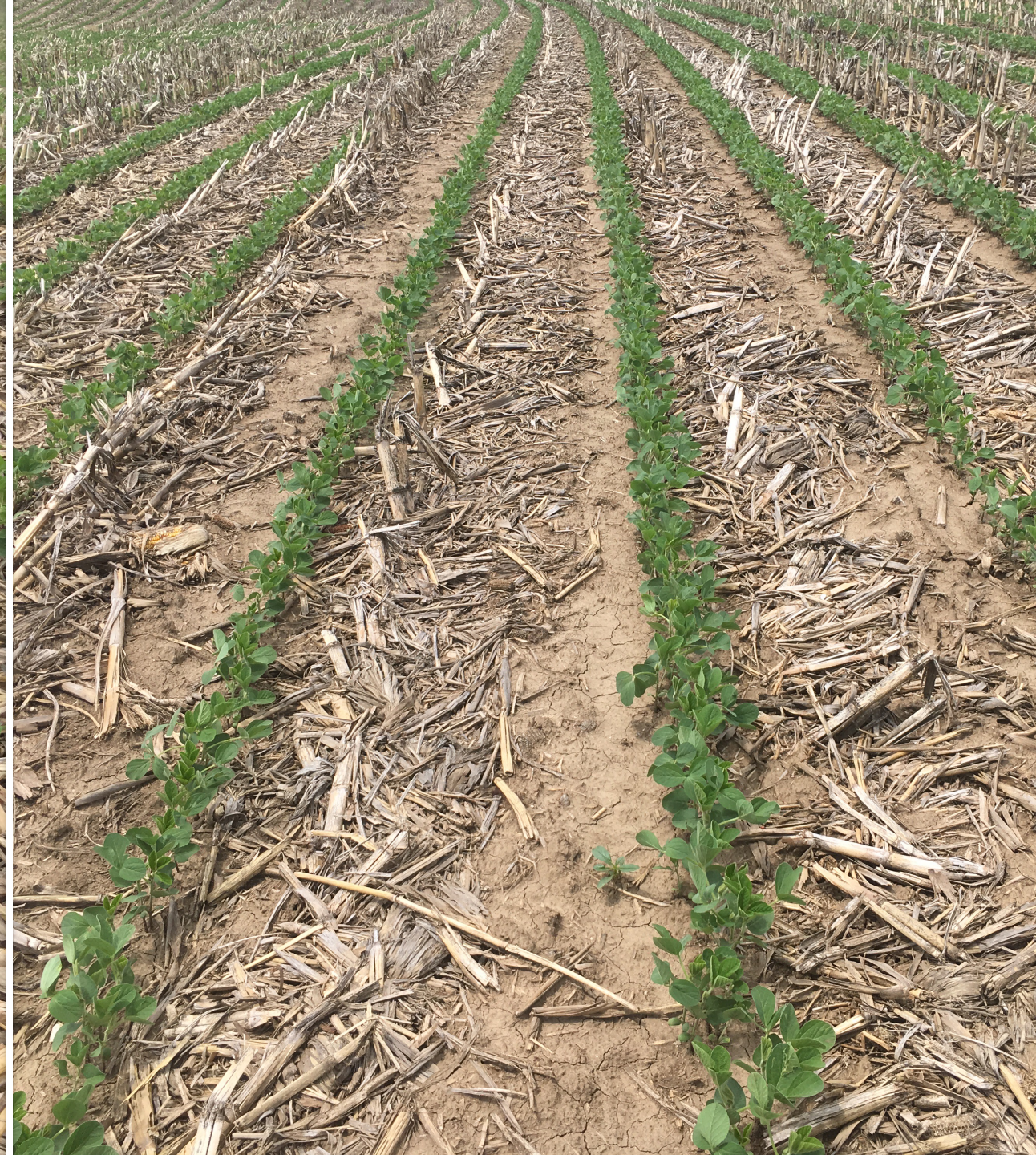




| 360 CHAINROLL®











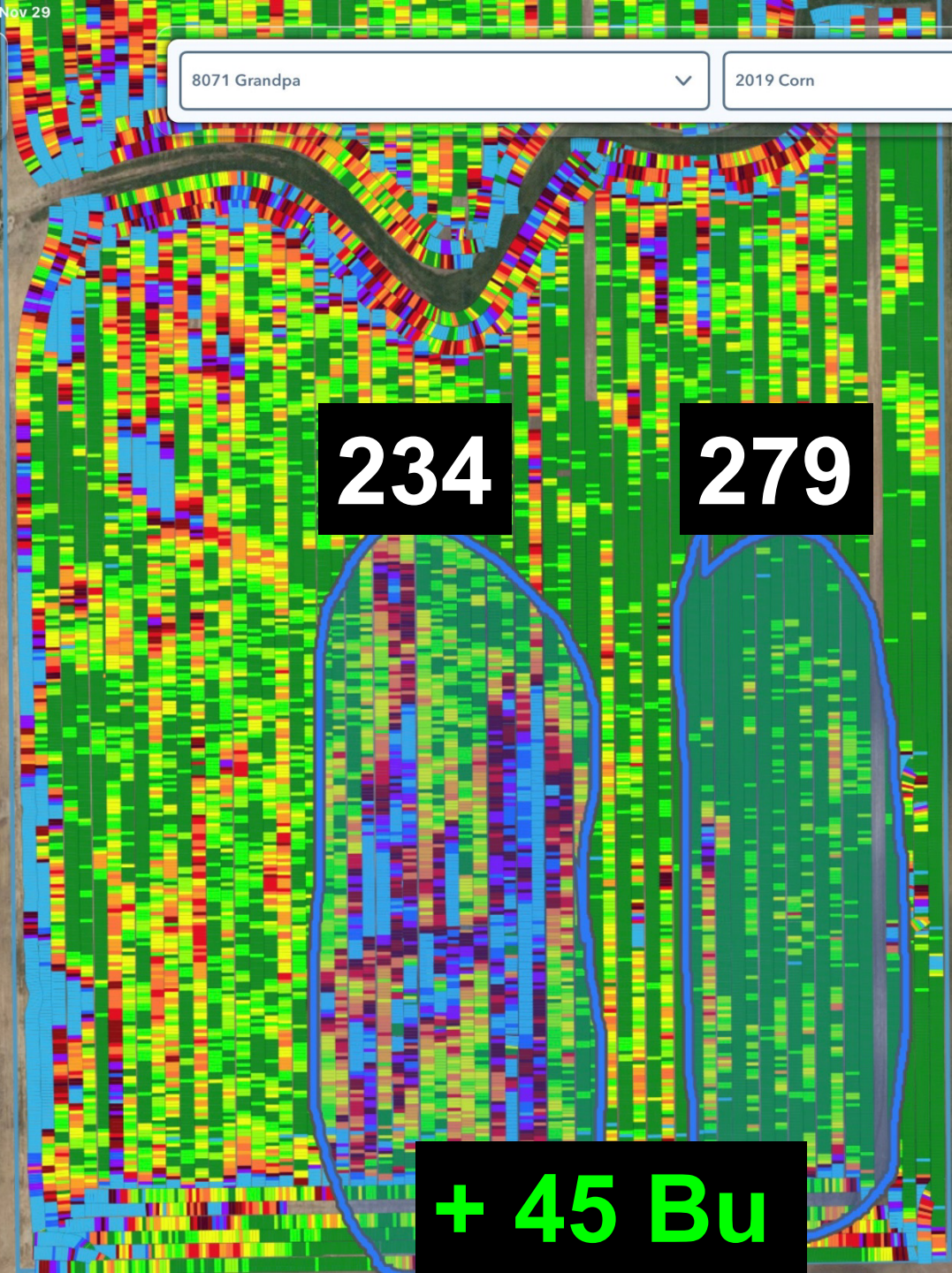








8071 Grandpa      2019 Corn      Yield



234

279

+ 45 Bu


> 270 bu/ac
262 - 270 bu/ac
253 - 262 bu/ac
244 - 253 bu/ac
236 - 244 bu/ac
228 - 236 bu/ac
219 - 228 bu/ac
210 - 219 bu/ac
202 - 210 bu/ac
194 - 202 bu/ac
185 - 194 bu/ac
< 185 bu/ac









A close-up photograph of a plant stem covered in fine, white, spreading hairs. A small, light purple flower is in bloom on the stem. The background is a light-colored, textured surface, possibly soil or a wall. A black rectangular box is overlaid on the left side of the image, containing white and green text.

**4/26: 89.4**

**5/20: 73.9**

**Gain: + 15.5**



**levo**









3

4

5

6

7

8

9

69°

58°

48°

64°

67°

54°

61°

54°

44°

42°

40°

45°

37°

30°

10

11

12

13

14

15

16

X



53°

52°

63°

58°

76°

76°

77°

41°

38°

34°

41°

53°

59°

56°

17

18

19

20

21

22

23



44% Cold Germ

Warm Yield: 278 bu/ac

Cold Yield: 212 bu/ac

- 66 bu loss

99% Cold Germ

Warm Yield: 276 bu/ac

Cold Yield: 275 bu/ac

- 1 bu loss



44% Cold  
Germ

Warm  
Planting  
31,000

Cold Planting  
25,000















| 360 WAVE™



# 360 WAVE VS ALTERNATIVE CLOSING SYSTEMS

## CLOSING STUDY (NO STARTER)

CLOSING SYSTEM		YIELD	DIFFERENCE FROM CONTROL
Rubber Wheels	Keeton Seed Firmer	225.2	Control
Furrow Cruiser	Keeton Seed Firmer	227.1	+1.9
Cast Wheels	Keeton Seed Firmer	231.4	+6.2
2-Stage Controlled	Keeton Seed Firmer	232.1	+7.4
2-Stage Controlled	FurrowJet	236.7	+11.6
Rubber Wheels	<b>360 WAVE</b>	<b>239.1</b>	<b>+14.0</b>
Cast Wheels	<b>360 WAVE</b>	<b>239.6</b>	<b>+14.5</b>
















**31<sup>st</sup> Annual  
NATIONAL  
NO-TILLAGE  
CONFERENCE**

January 10-13, 2023 • St. Louis, Mo.

**Yetter**  
FARM EQUIPMENT  
SINCE 1930

**Ag Leader**

**exapta.**  
solutions, inc.

**Precision  
Planting**

**MonTag**

**The Andersons**

**GS3**  
GS3 QUALITY  
SEED

**Sound**

**Martin Till**

**MidWest  
Bio-Tech, Inc.**

**aea**

**L**  
LAFORGE

**wearparts**  
TILLAGE TOOLS

Cultivating Solutions for Growth

**DAWN**



