



Lessons from Australian Drought

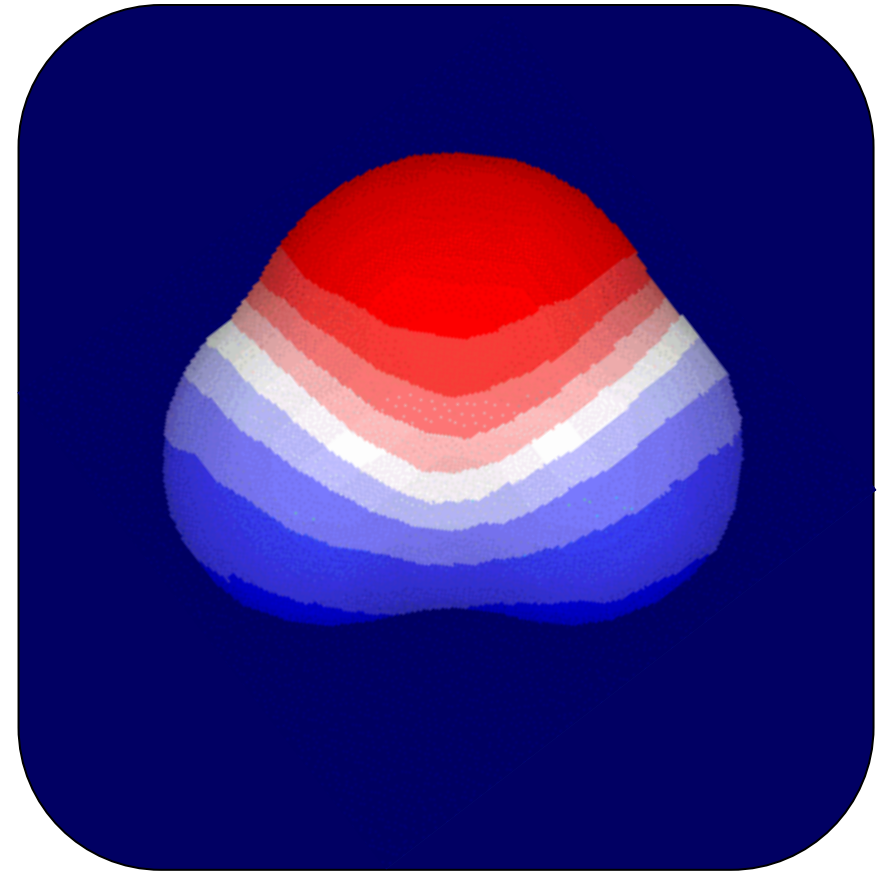
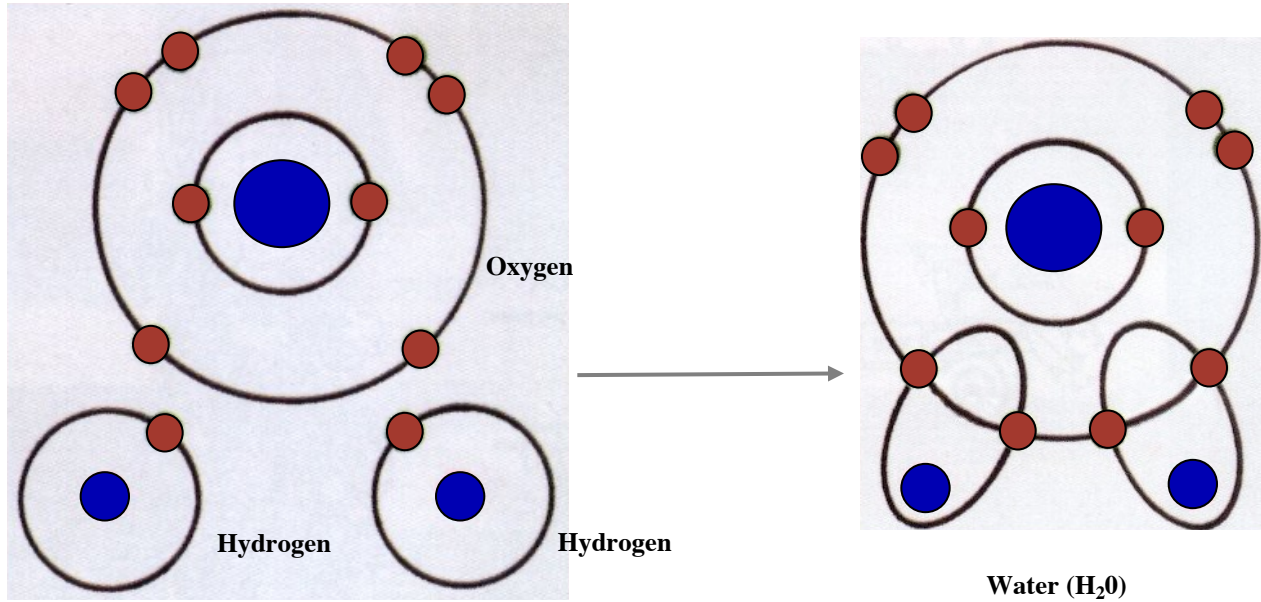
David McGavin & Greg Butler



A) In season drought

B) Drought on drought

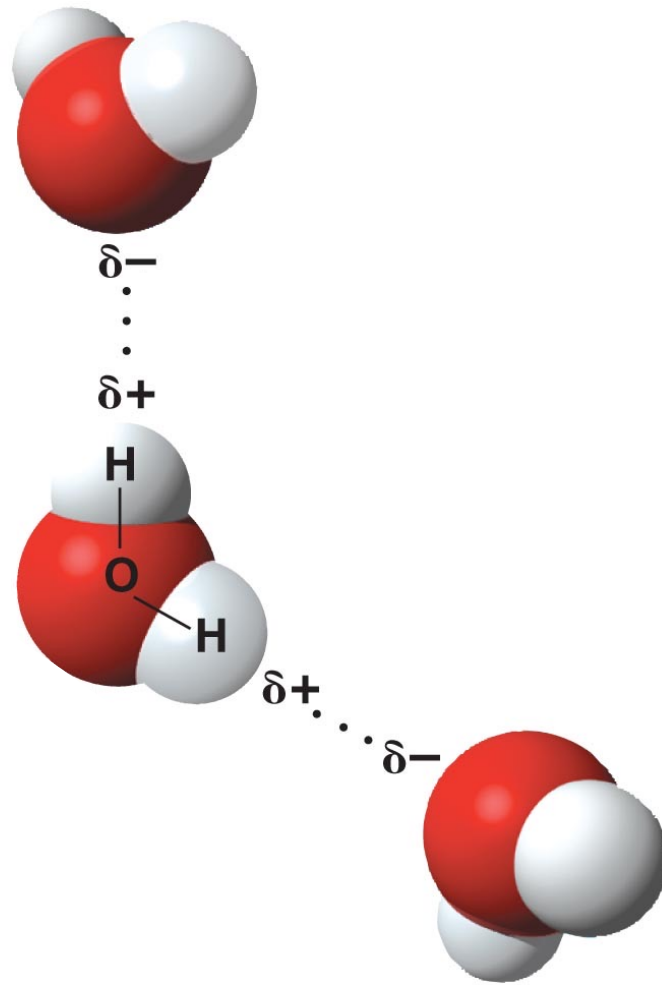




■ Negative polarity

■ Positive polarity





**31st Annual
 NATIONAL
 NO-TILLAGE
 CONFERENCE**
 January 10-13, 2023 • St. Louis, Mo.

Yetter
 FARM EQUIPMENT
 SINCE 1930
Ag Leader

exapta.
 solutions, inc.
 Precision
 Planting

MonTag
The Andersons

GS3
 GS3 QUALITY
 SEED
 Sound

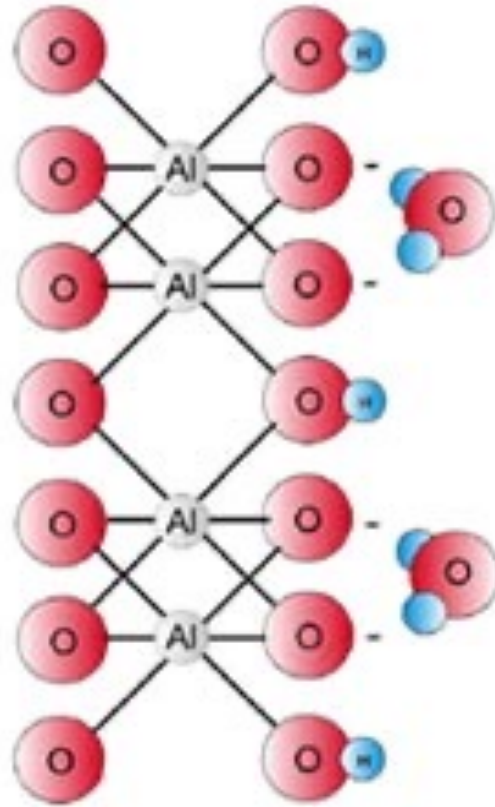
Martin Till
 MidWest
 Bio-Tech Inc.

aea

LAFORGE

wearparts
 TILLAGE TOOLS
 Cultivating Solutions for Growth
DAWN

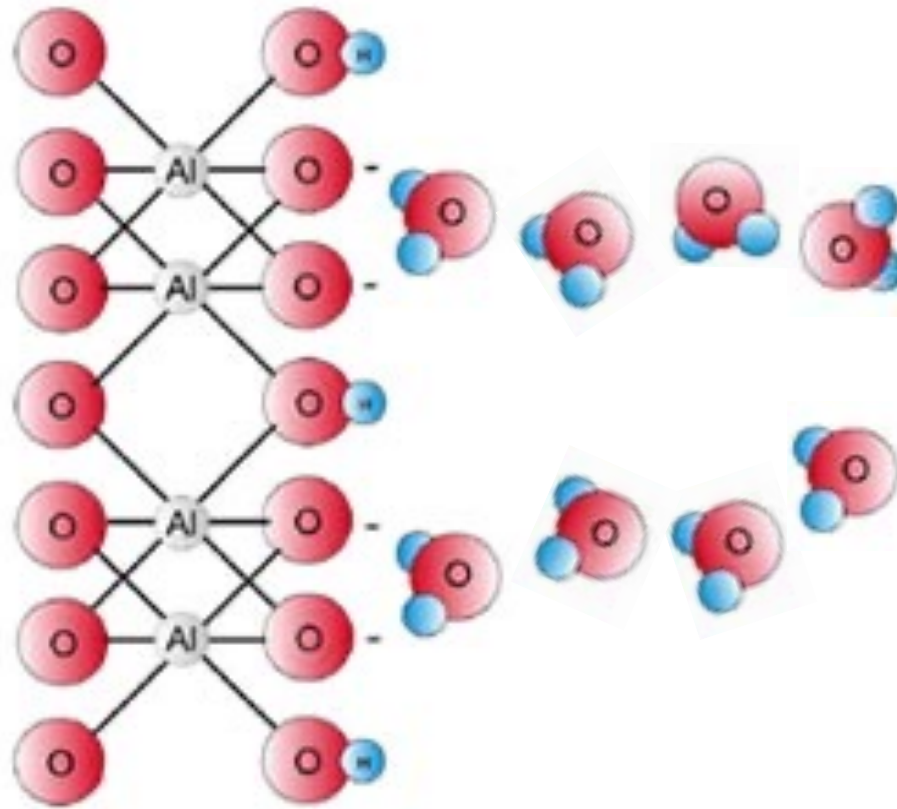
Soil Surface



Plant unavailable water



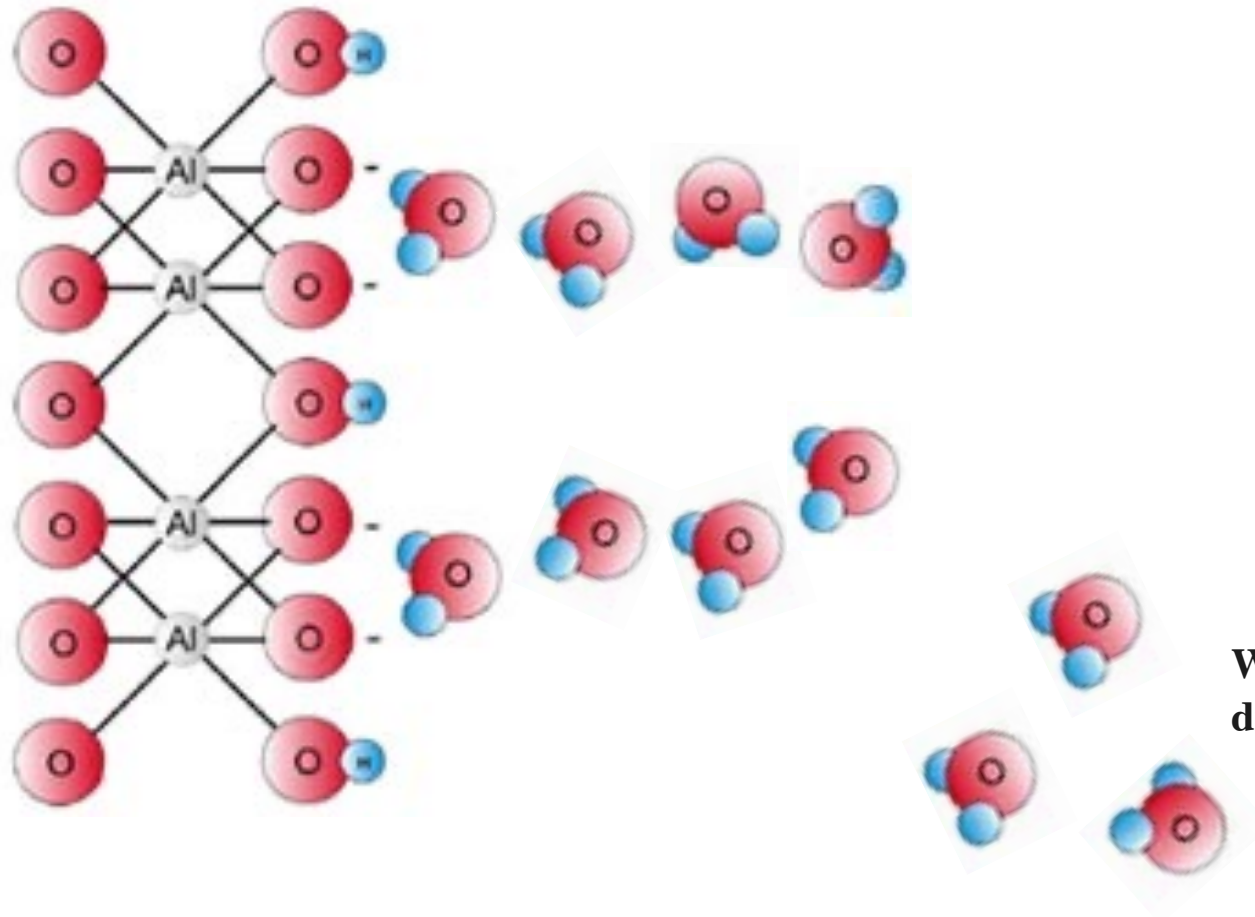
Soil Surface



Plant Available Water



Soil Surface



Water
draining

31st Annual
**NATIONAL
NO-TILLAGE
CONFERENCE**
January 10-13, 2023 • St. Louis, Mo.

Yetter
FARM EQUIPMENT
SINCE 1930
Ag Leader

exapta.
solutions, inc.
Precision
Planting

MonTag
The Andersons

GS3
GS3 QUALITY
SEED
Sound

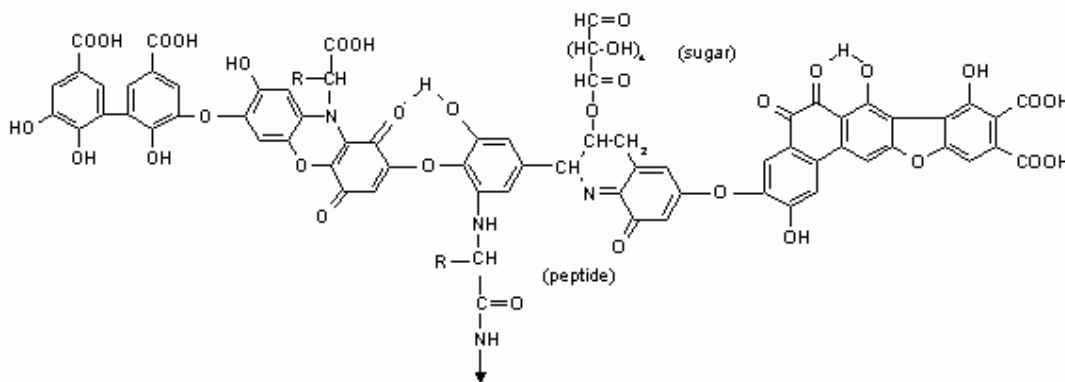
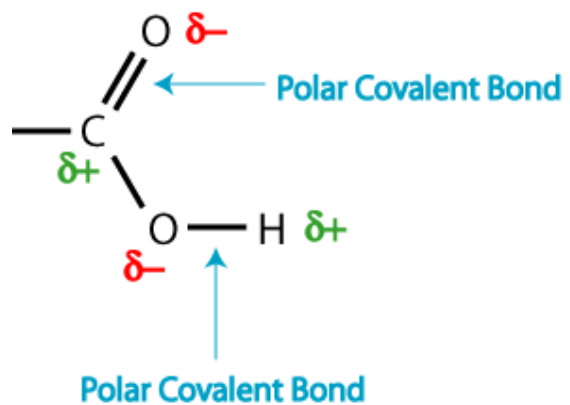
Martin Till
**MidWest
Bio-Tech, Inc.**

aea

LAFORGE

wearparts
TILLAGE TOOLS
Cultivating Solutions for Growth
DAWN

Carboxyl group



Model structure of humic acid



Ag Leader®



Precision
Planting®



The Andersons®



Sound

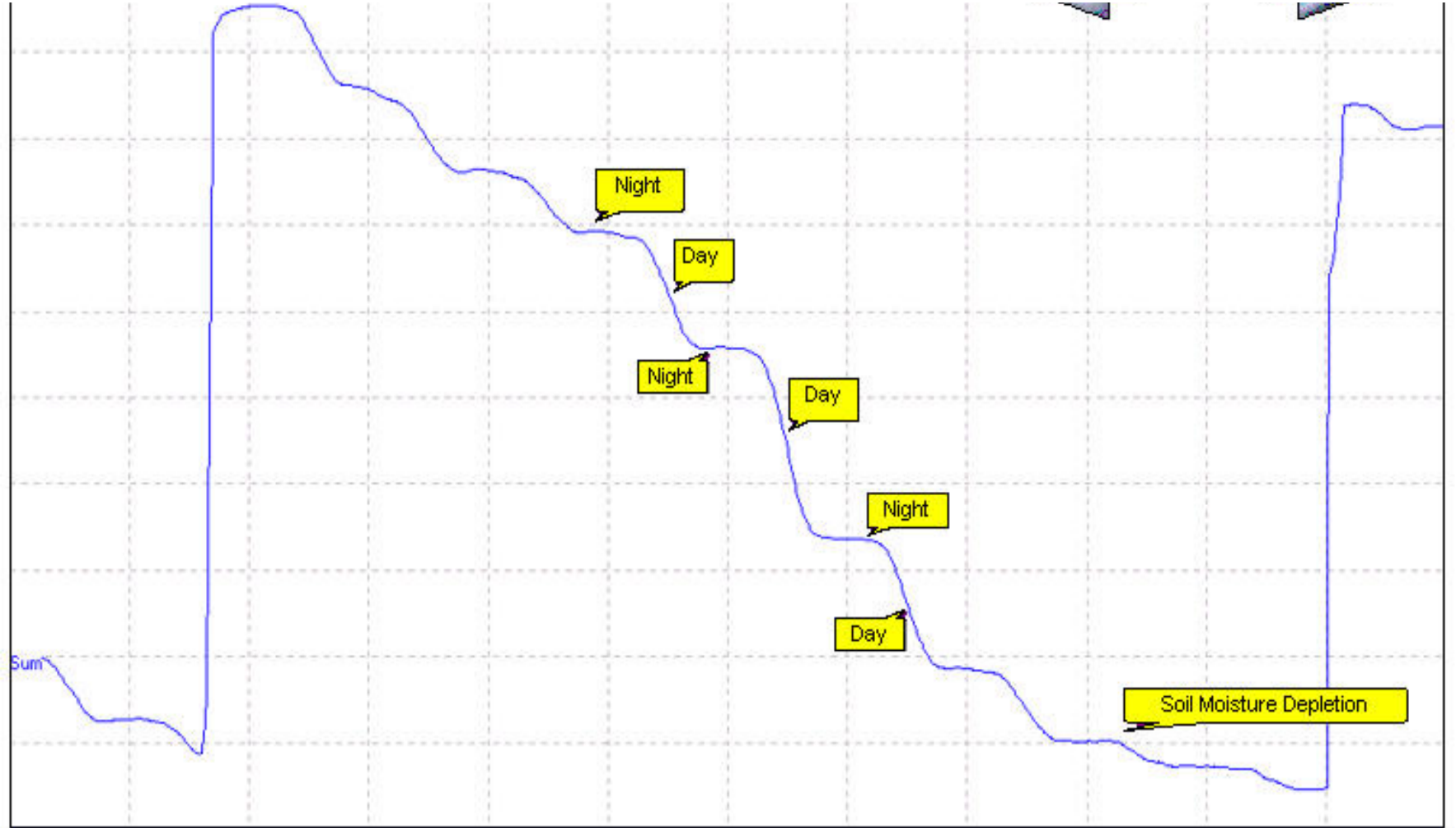


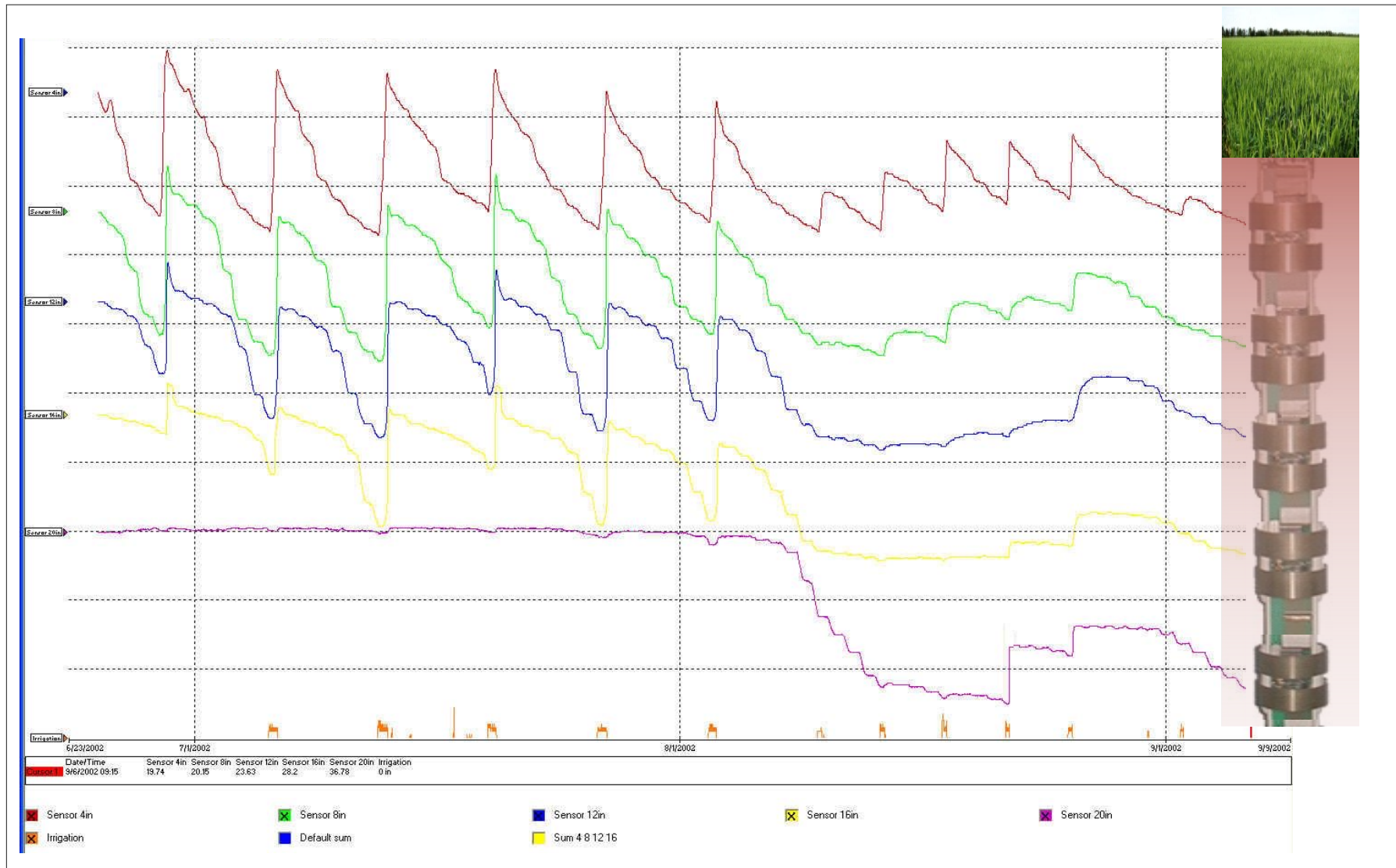
MidWest
Bio-Tech^{INC.}



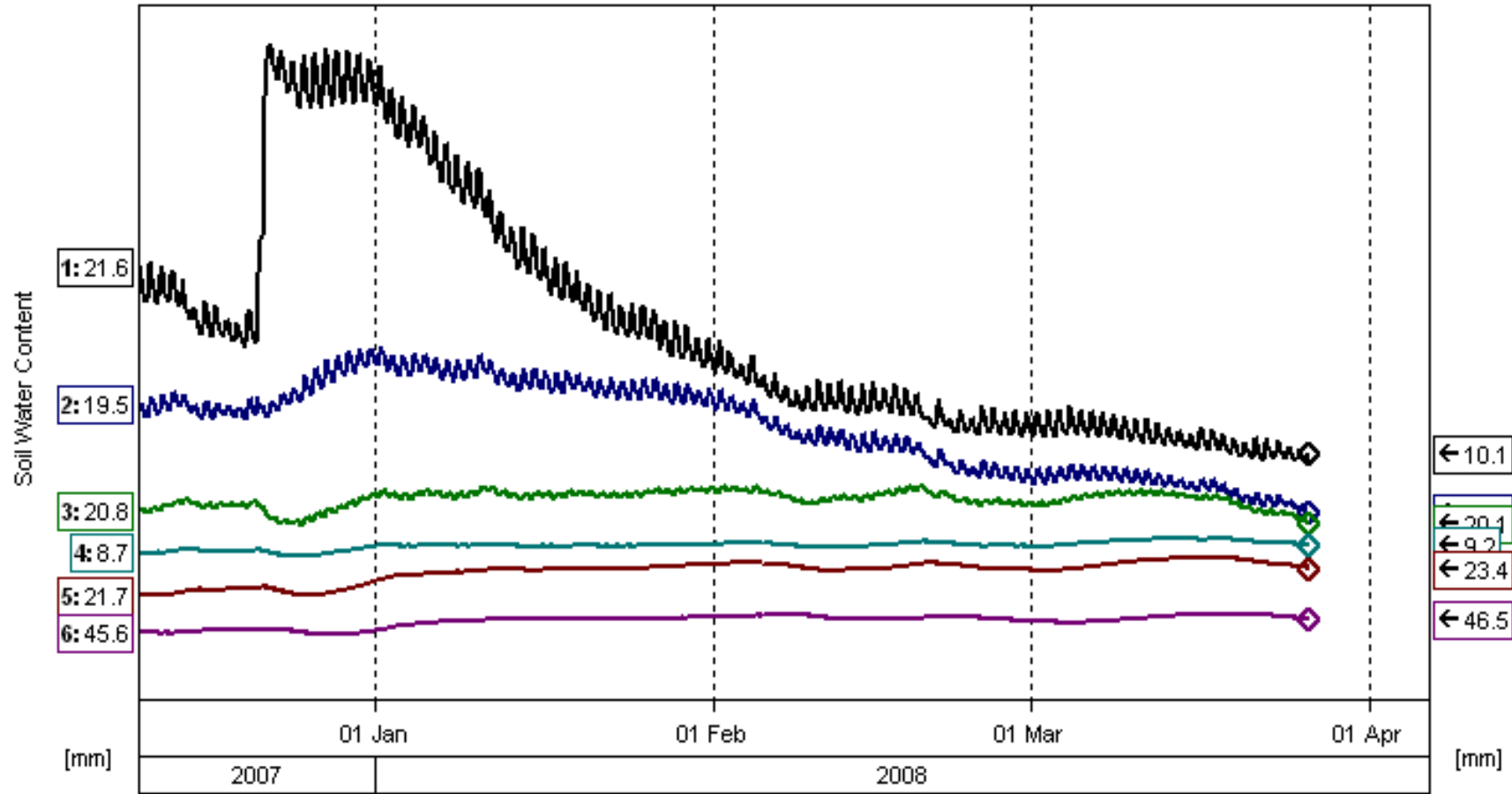
wearparts
TILLAGE TOOLS
Cultivating Solutions for Growth

DAWN®





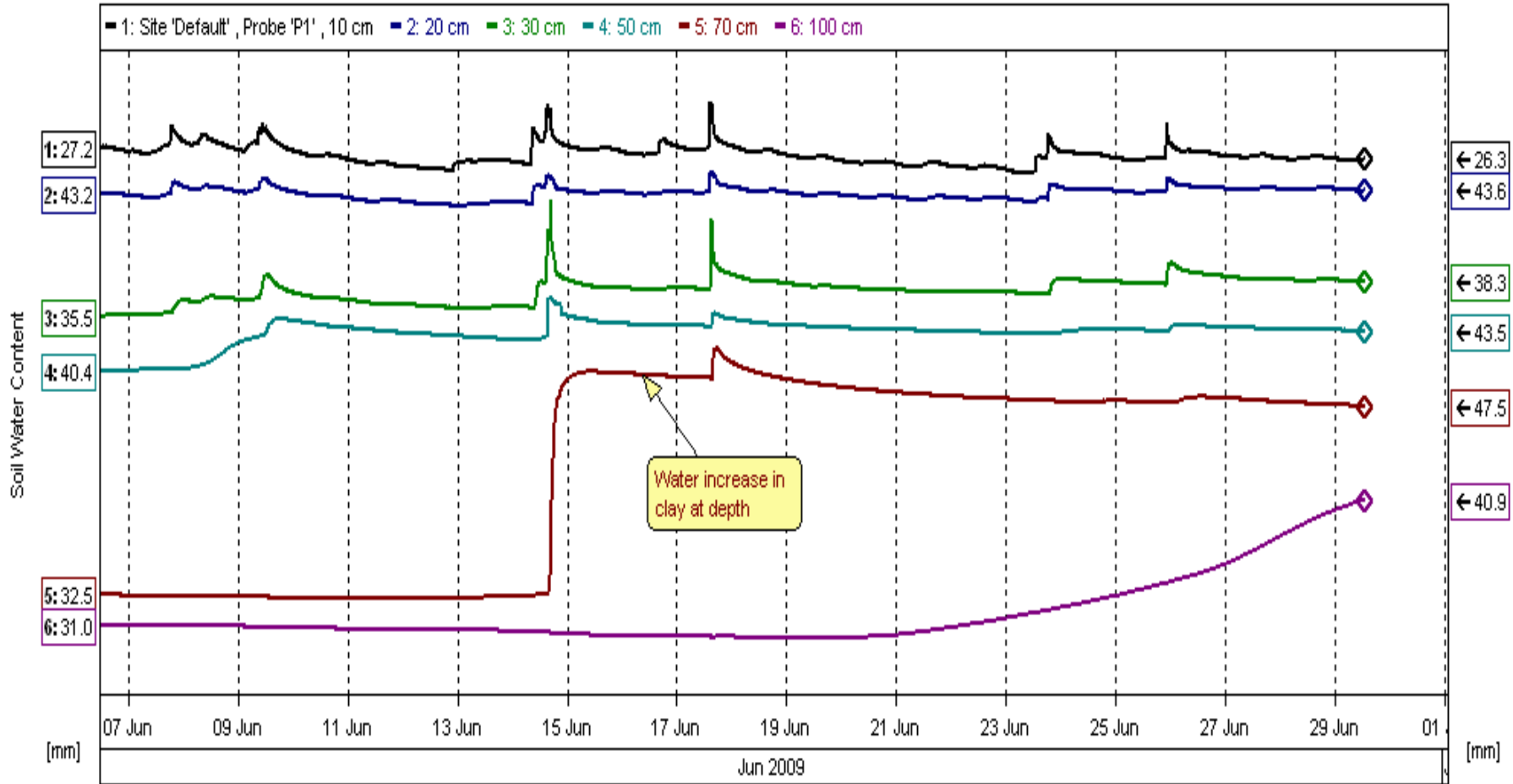
Loss of moisture from shallow summer rainfall



Generated by Irrimax® Sentek Pty Ltd



Deep moisture penetration (Winter)



Generated by Irrimax™ Sentek Pty Ltd



Ag Leader®



Precision
Planting®



The Andersons®



Sound



MidWest
Bio-Tech, Inc.

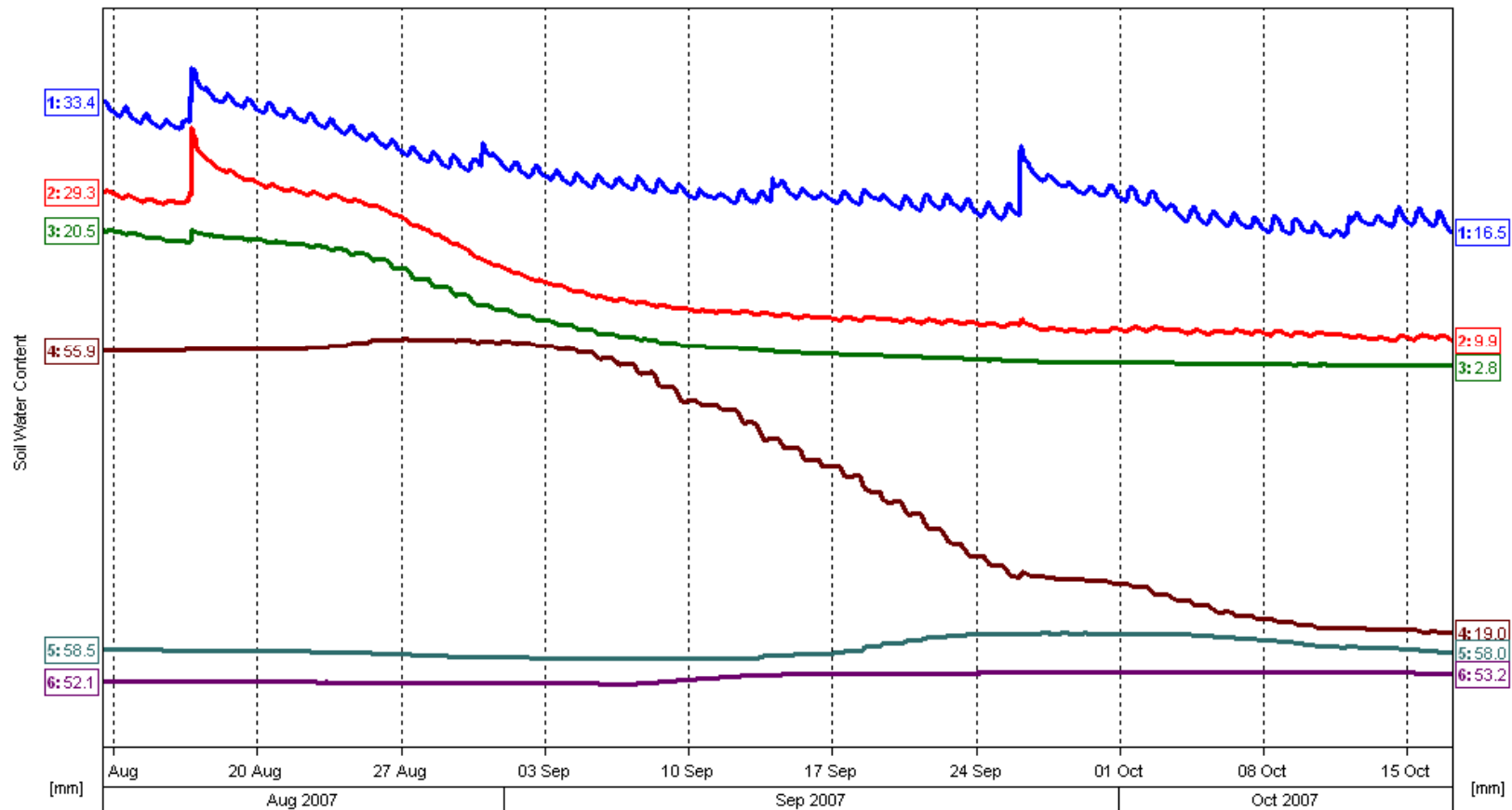


wearparts
TILLAGE TOOLS
Cultivating Solutions for Growth

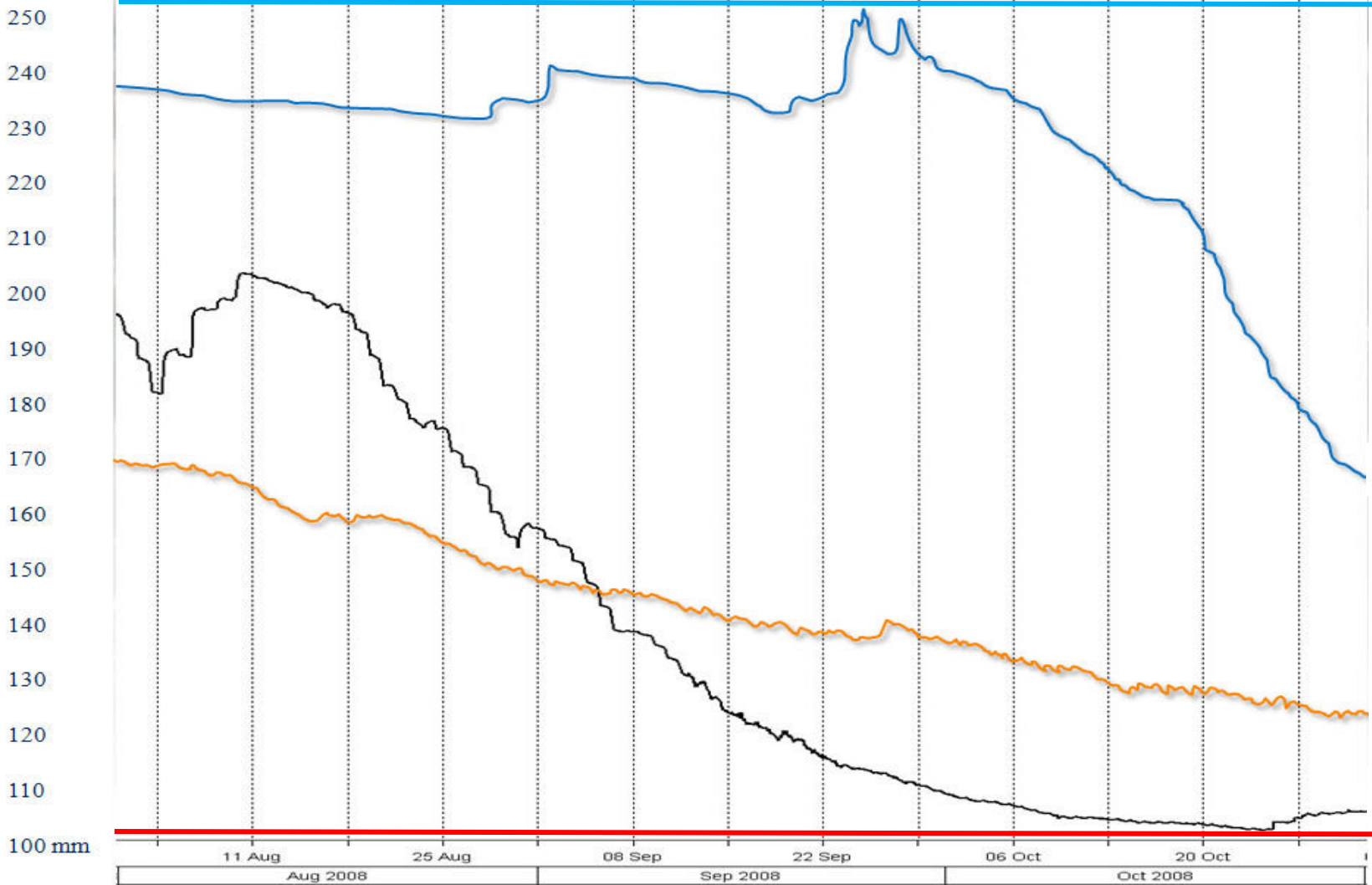
DAWN

1: Site 'Default' - Probe 'P1' - 10 cm 2: 20 cm 3: 30 cm 4: 50 cm 5: 70 cm 6: 100 cm

Comment: Tarlee1



Wettest Recorded



2009. 3.7t @ <1% Scrn

2007. 2.9t @ 3% Scrn

2008. 4.0t @ 16% Scrn

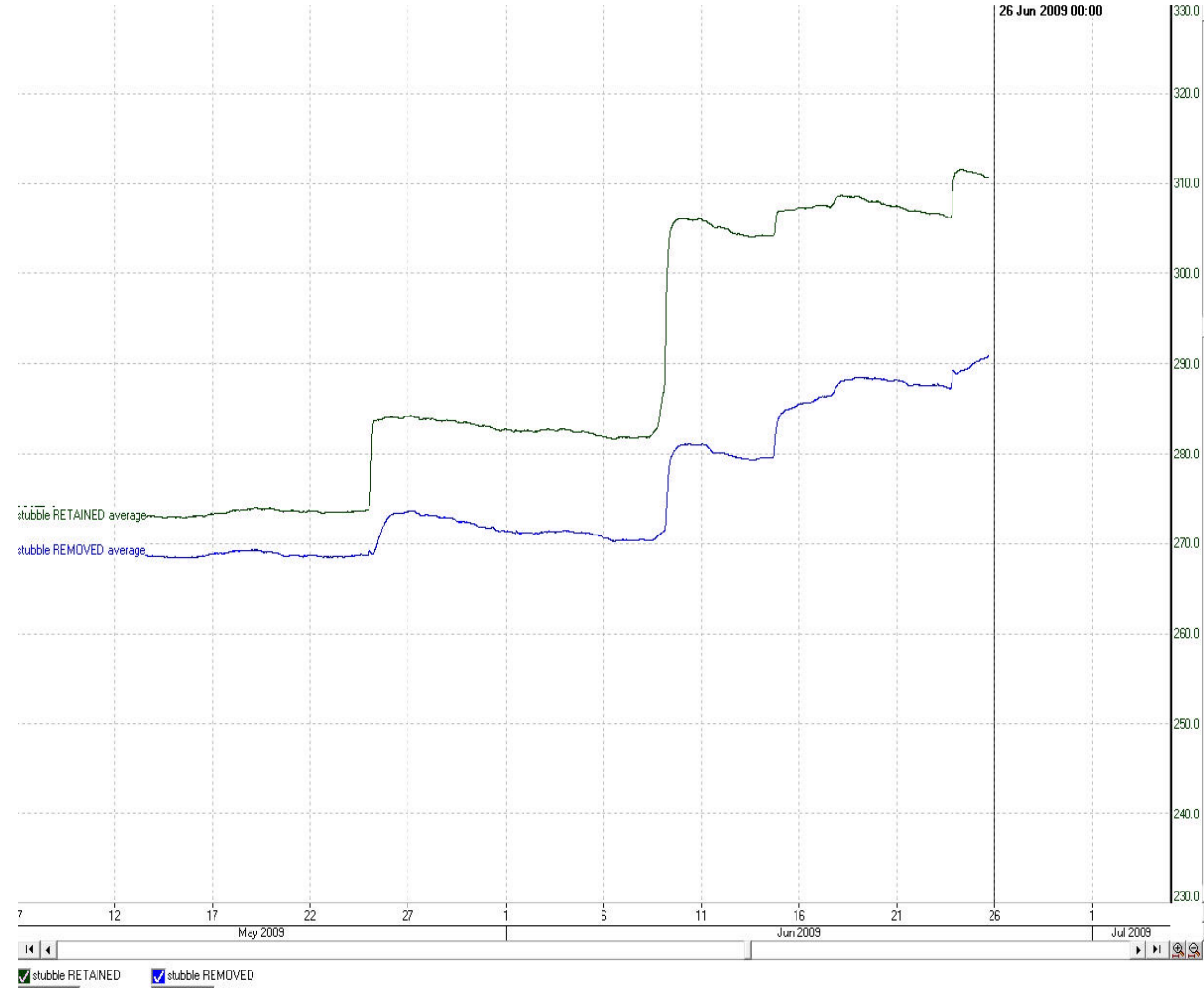
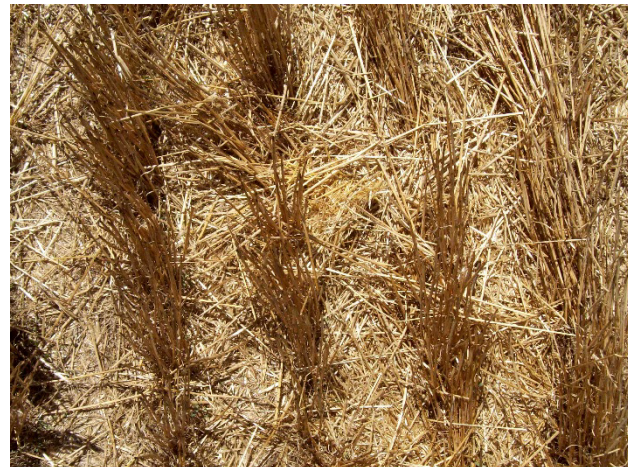
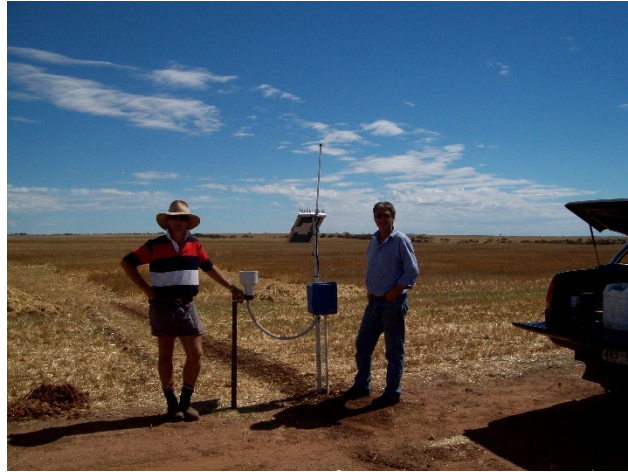
Driest Recorded

< Yield Potential

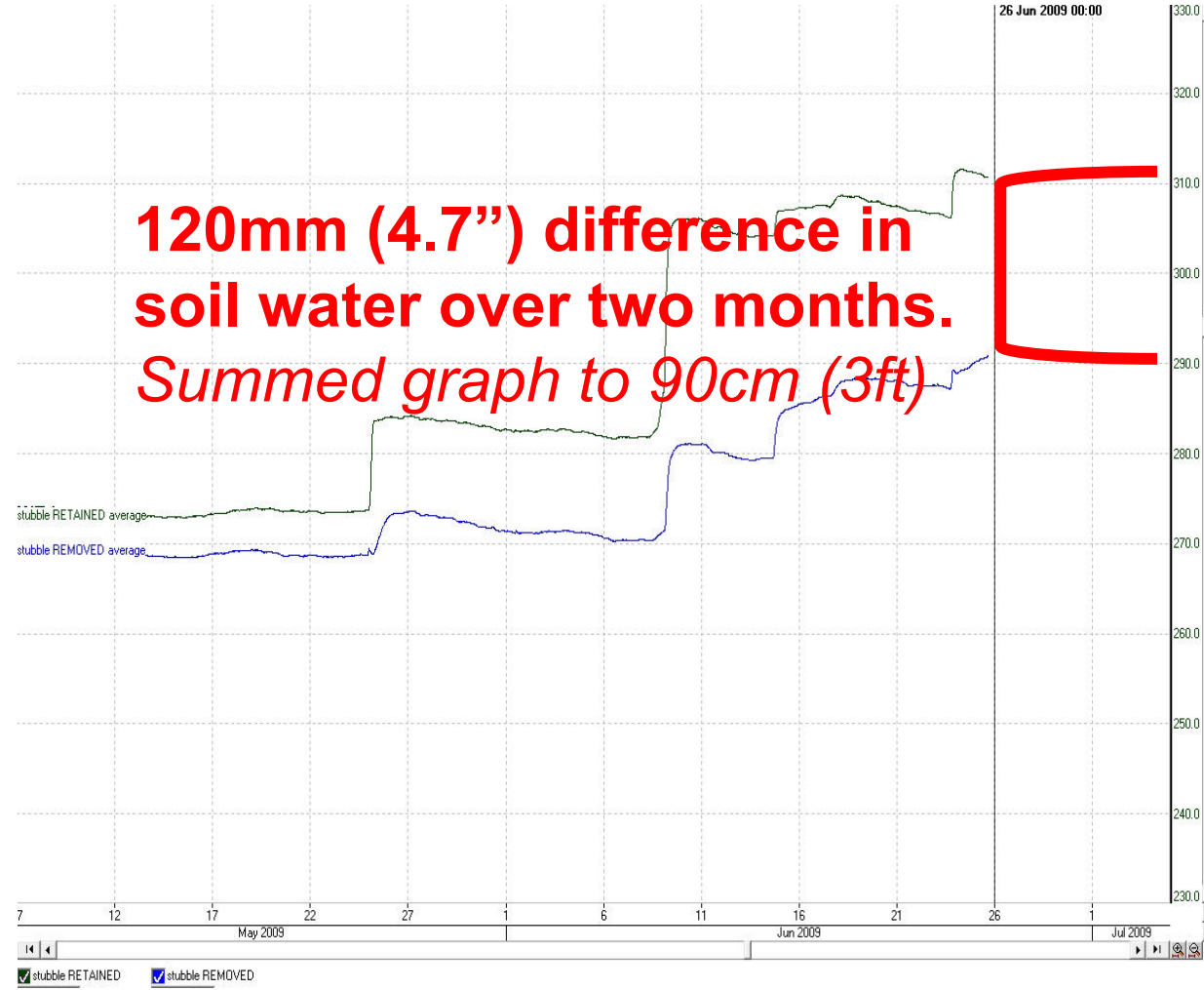
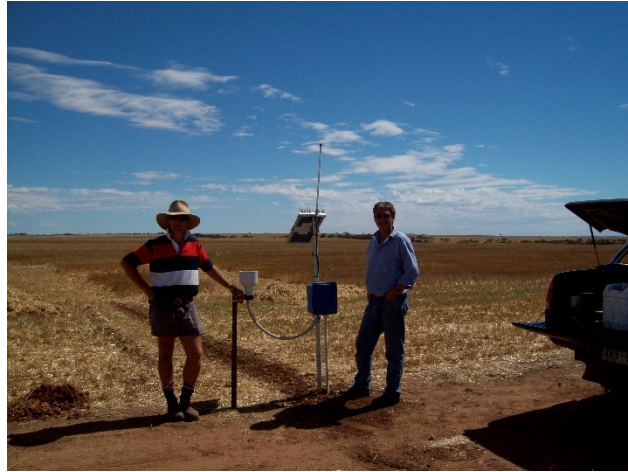
Grain Fill >



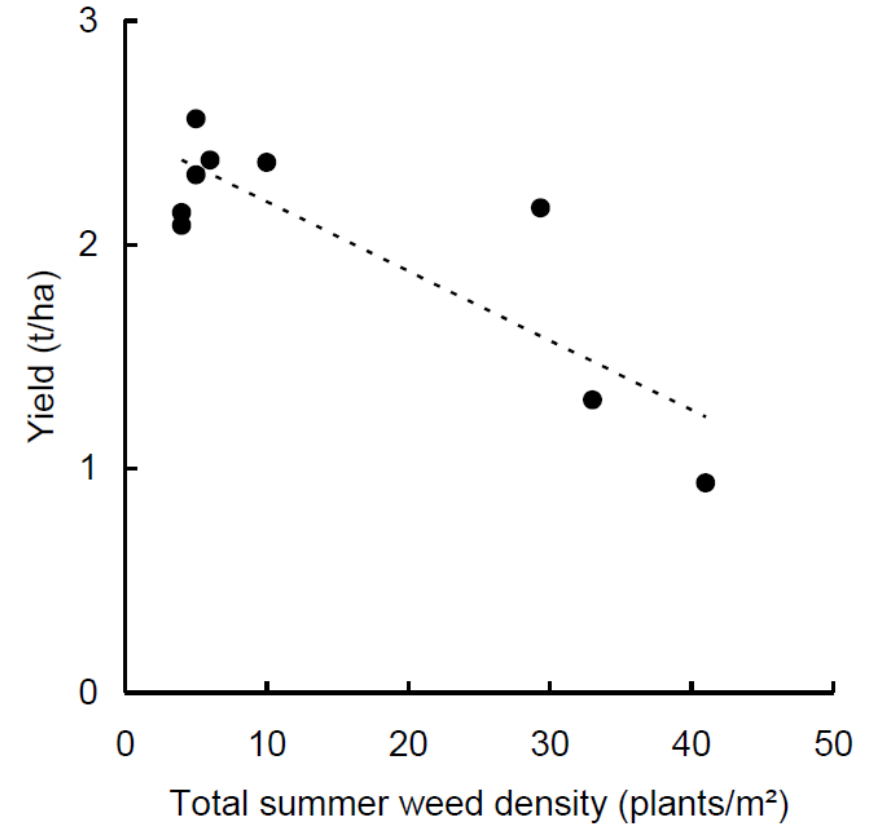
groundcover, groundcover & groundcover



groundcover, groundcover & groundcover



Summer Weed Control



Courtesy James Hunt, CSIRO & GRDC



Summer Cover Crops



Tweets 1,300 Following 162 Followers 2,924 Likes 310 Following

Tweets **Tweets & replies** **Media**

SANTFA @SANoTill · Dec 14
Cover Crops in marginal Aust cropping! yield map tells same story it has (for me) the last 3 years. A 1tn/ha or more yield decline after mixed summer cover terminated @ flowering. What's the key to seeing the benefits from biodiversity etc without the yield penalty?@phillifarms

The screenshot shows a digital interface for a yield map. At the top, it displays '0 (cm)' in a green box, 'wet' text, and a '3.12 inst. (t/ha)' value with a refresh icon. Below this is a 'Yield t/ha' legend with a color scale from 2.00 (red) to 5.00 (green). The main part of the image is a grid of colored squares representing different yield levels across a field.

13 4 44



Companion and Intercrops



Baling: Failed Crops and Straw.



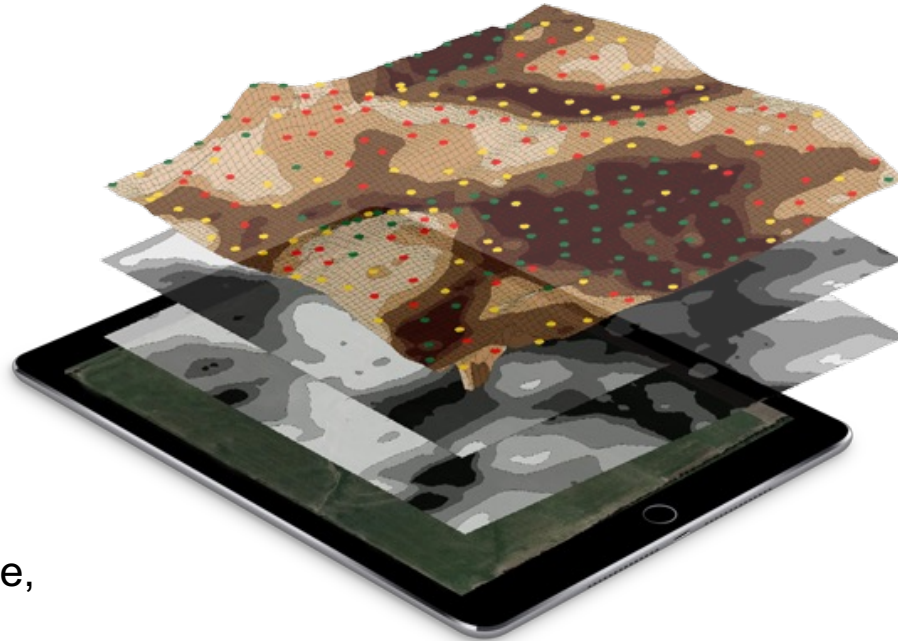
Measure

Organic Matter

Soil OM is both evidence of previous productivity and a driver of future yields. The increased water availability, soil structure and nitrogen mineralization are keys to guiding inputs.

Multi-depth Texture (EC)

Measuring soil electrical conductivity is a proven method of mapping soil texture. The major driver of water holding capacity, Cation-Exchange Capacity (CEC), drainage, topsoil depth and nutrient use, loss, and storage. Recording EC at several depths provides these insights throughout the rooting zone.



Soil pH

Nutrient use, crop growth, and herbicide activity are all affected by the pH of the soil. Extreme variability within fields demands the dense sampling of on-the-go soil sensing.

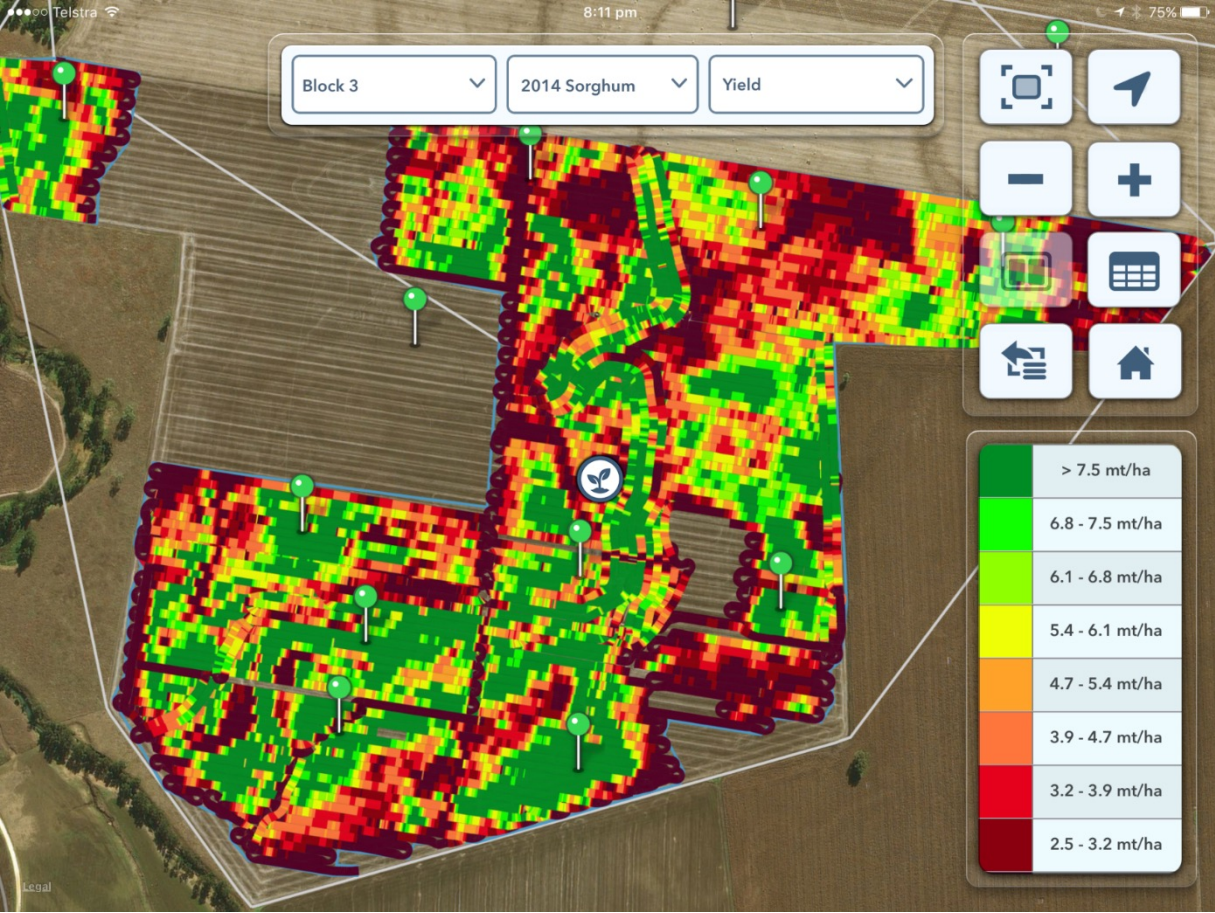
U Series



Veris Soil EC and OM mapping is now available in a compact yet powerful package. This reduces the total equipment investment and widens the mapping window.



Map Layers



31st Annual
NATIONAL
NO-TILLAGE
CONFERENCE

January 10-13, 2023 • St. Louis, Mo.



Ag Leader



Precision
Planting



The Andersons



Sound



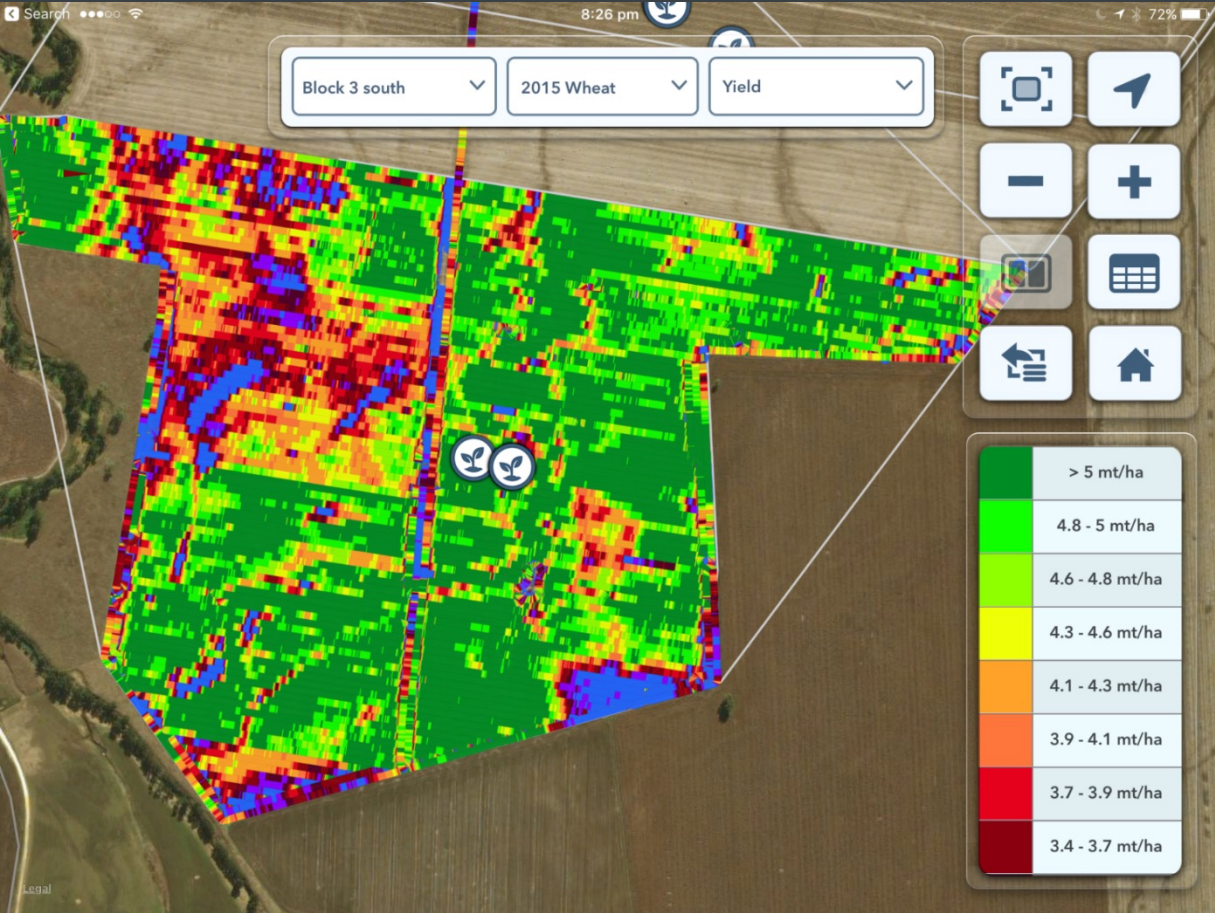
MidWest
Bio-Tech, Inc.



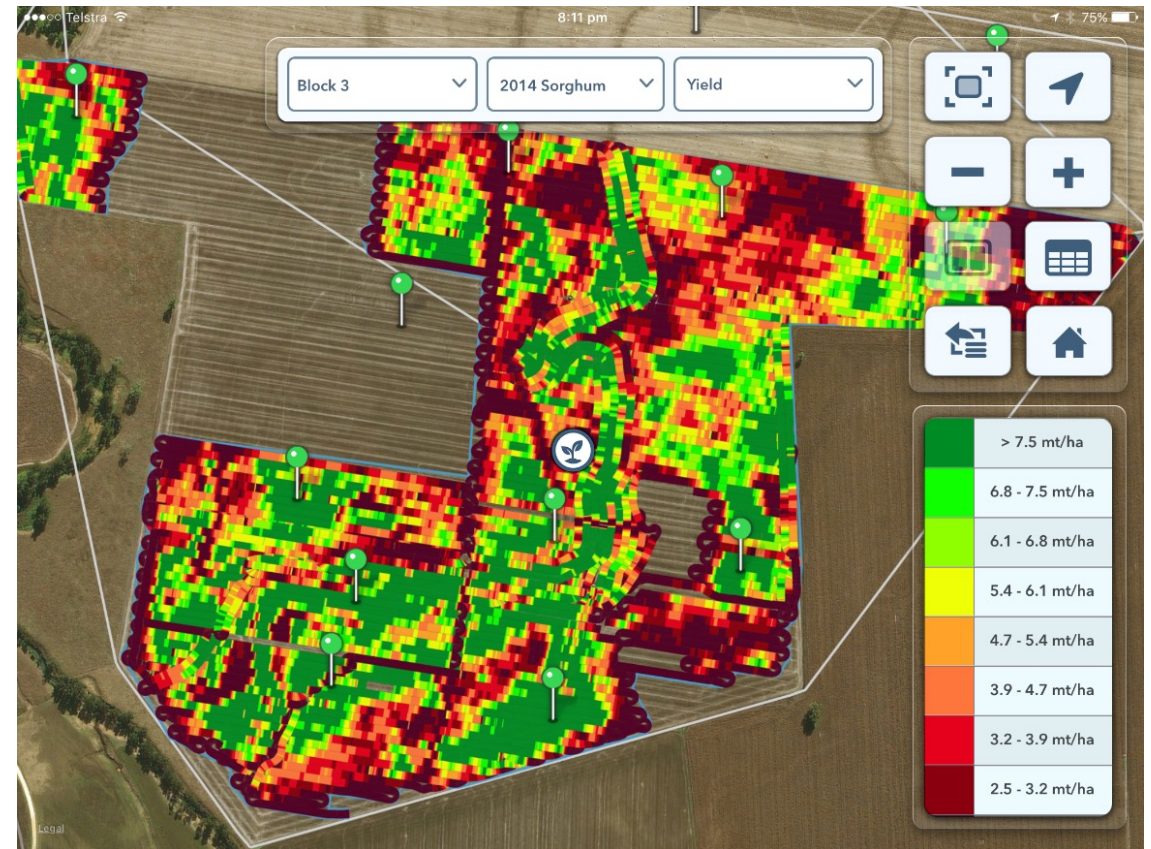
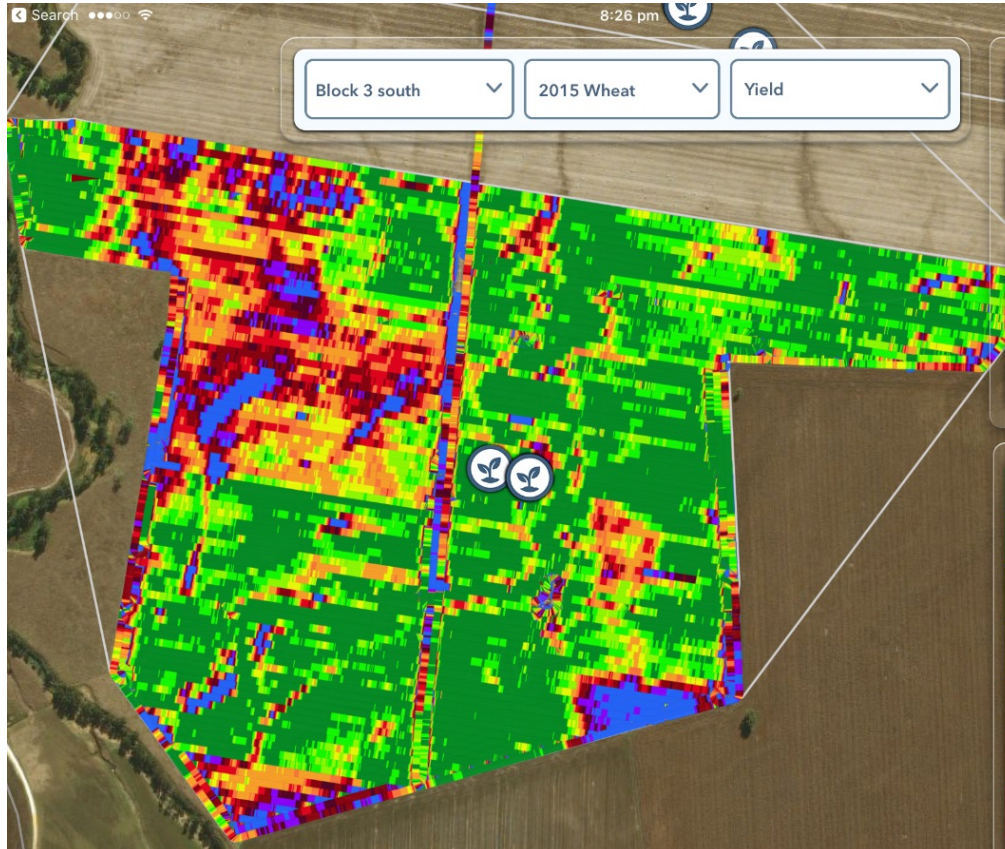
wearparts
TILLAGE TOOLS

Cultivating Solutions for Growth
DAWN

Map Layers



Map Layers



31st Annual
NATIONAL
NO-TILLAGE
CONFERENCE

January 10-13, 2023 • St. Louis, Mo.



Ag Leader®



Precision
Planting®



The Andersons®



Sound



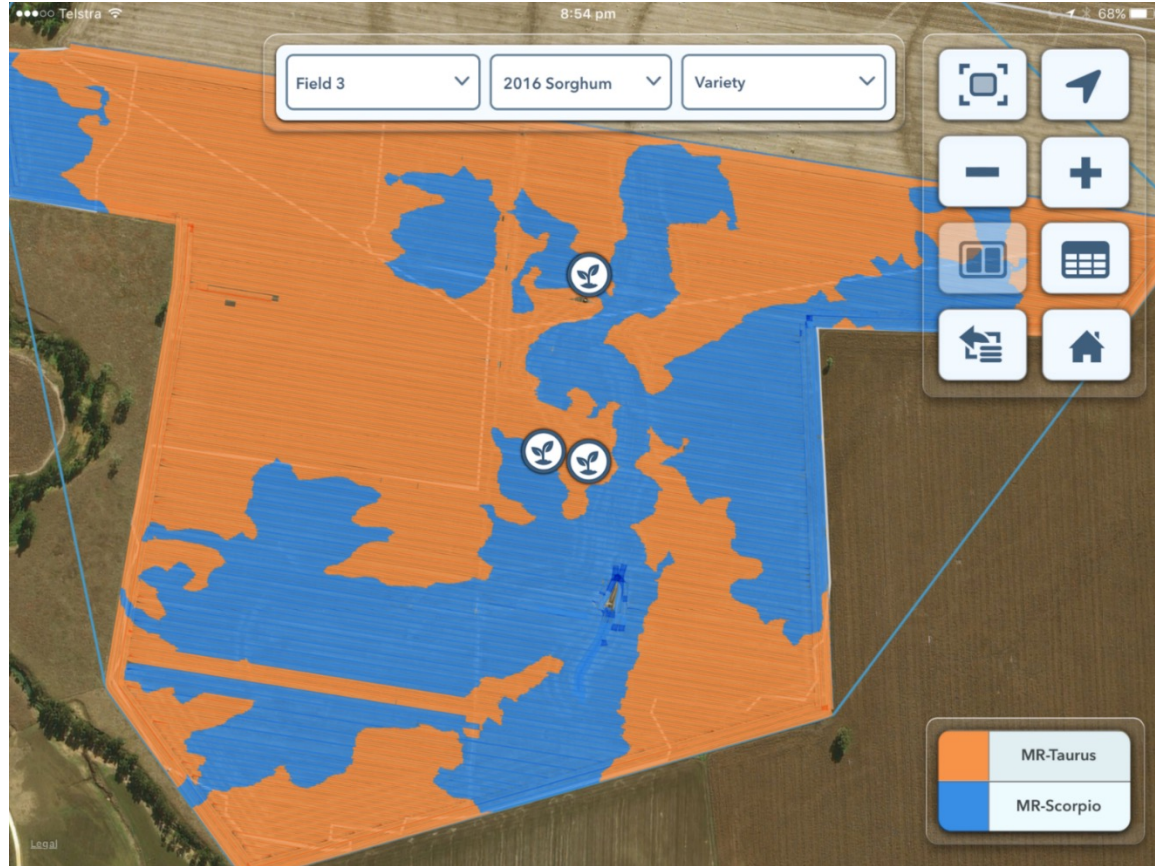
MidWest
Bio-Tech, Inc.



wearparts
TILLAGE TOOLS

Cultivating Solutions for Growth

DAWN®



31st Annual
NATIONAL
NO-TILLAGE
CONFERENCE

January 10-13, 2023 • St. Louis, Mo.



Ag Leader®



Precision
Planting®



The Andersons®



Sound



MidWest
Bio-Tech, Inc.



wearparts
TILLAGE TOOLS

Cultivating Solutions for Growth
DAWN®