



No-Till Product Solutions Round 2: Innovations for Sustainable Farming

Featuring: Copperhead Ag, Yetter Farm Equipment,
HUMA, Saddle Butte





WHO IS COPPERHEAD AG

Humble Beginnings:
Created by a farmer to
fix a problem he was
seeing in his own fields,
Copperhead Ag has
always been centered
around the needs of
farmers.



Meet the Office Staff

Jill Jensen

Accounting
& Billing
jill@copperheadag.com



Brooke Larsen

Marketing Director
brooke@copperheadag.com



Chris Werner

Vice President
chris@copperheadag.com



James Berg

Logistics & Shipping
Manager
james@copperheadag.com



Meet the Sales Team

Brad Kramer

Inside Sales
& Support

brad@copperheadag.com



Case Barton

Ohio, Indiana,
& Michigan

case@copperheadag.com



Norman McLaughlin

Canada

norm@copperheadag.com



Katie Long

Kansas, Nebraska,
& Missouri

katie@copperheadag.com



Mason Eilderts

Iowa & Illinois

mason@copperheadag.com



Sunco



Acquired in July of 2022,
the formerly Sunco product
line consists of our
Sabertooth Row Cleaners,
Nutrimate Fertilizer System,
Props, and Stabilizers





SABERTOOTH ROW CLEANERS



Staggered Discs



Concave Discs



Heavy Duty Bearing

Sabertooth Row Cleaners- Why they are superior

Other Row Cleaners



Straight Discs

Fling soil into other rows. Pressure on bearings



Competing Discs

Discs compete for trash and often get plugged on debris



Cheap Bearings

Low quality bearings that gets pushed and pulled on which wears faster, only 4 bolts on the hub

HOW IT SHOULD BE: Sabertooth



Concave Discs

To roll trash away and disc angle takes pressure off the bearings



Leading & Trailing Discs

To prevent plugging on debris and narrows the path



Heavy Duty Bearing

Run 1 larger bearing in our hub for extra life, and 6 bolts on the hub making it more robust!

ROW CLEANER OPTIONS



FLOATING



SCREW ADJUST



PIN ADJUST



NARROW



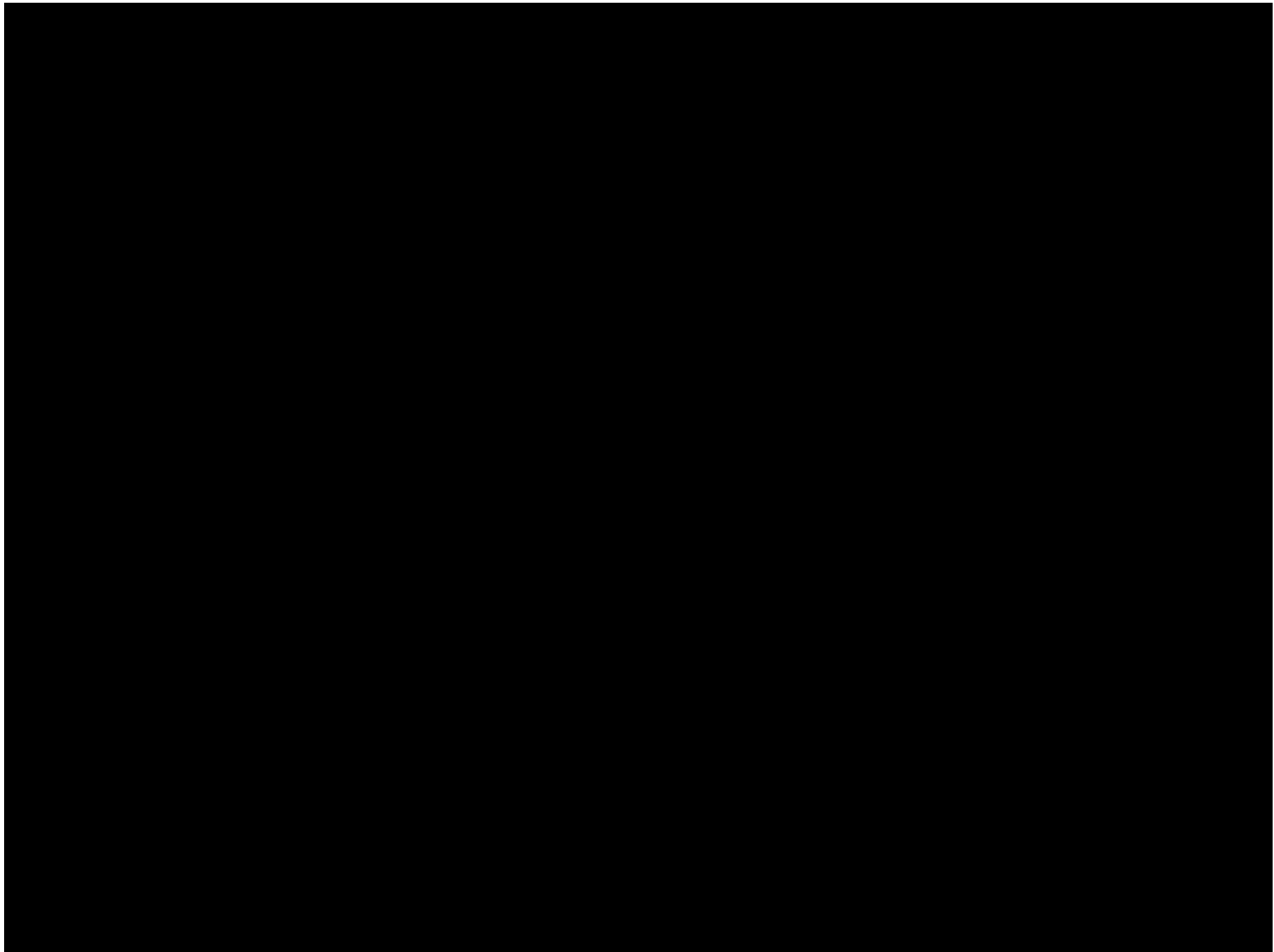
Strip-Till

Yetter Row Cleaner



Sabertooth Row Cleaner





NUTRIMATE³ FERTILIZER APPLICATION



**Use Independently or with
Sabertooth Row Cleaners**



**Notched Disc to prevent slippage
and maintain movement**



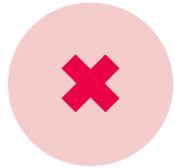
**Single or Double Application
Liquid or Dry Fertilizer**

Nutrimate 3: Why 2x2x2 Fertilizer Application works

Other Fertilizer Application



1
Surface applied starter is wasted when it doesn't migrate to the root zone



2
In Furrow starter application can cause seed burn resulting in stand reduction and yield loss



3
Rigid points cause strain on bearings and row units

HOW IT SHOULD BE: Nutrimate 3



1
Placing fertilizer 2x2 in the root zone is the most efficient use of costly starter



2
Multiple precise placement options allows you to apply high gallons of nutrients

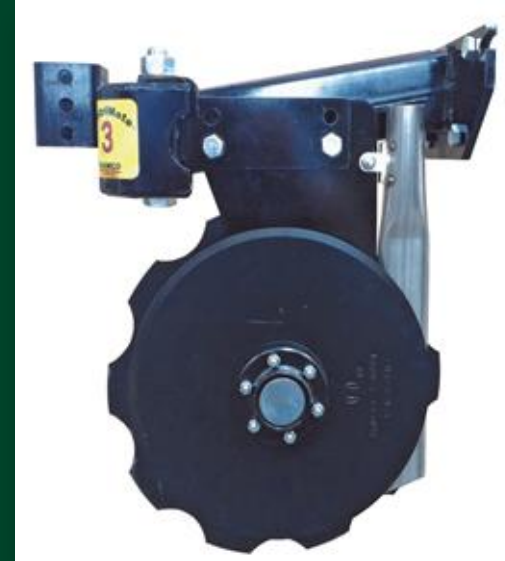


3
10 degree pivot allows flex independently of planter row unit

NUTRIMATE³ **OPTIONS**



Single Liquid



Single Dry



Double Liquid

IMPLEMENT STABILIZER



PRIPP

Conserve
Valuable
Moisture



Eliminate
Erosion

Reduces runoff on side hills so stands are uniform in propped fields, even on the roughest terrain

+

Reservoirs and dams stay throughout the season, aerating the soil and promoting deeper root growth and are easy on harvest equipment

=

More bushels per acre at harvest time

RK Products

Gauge Wheel Arm



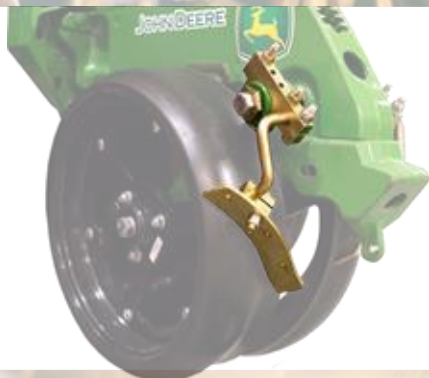
Gauge Wheel Arm Repair Kit



Closing Wheel Arm Repair Kit



Mud Scraper



Seed Tube Guard



RK Products



CLOSING WHEEL ARM REPAIR KIT



SINGLE BEARING GAUGE WHEEL ARM

RK Products



MUD SCRAPER



SEED TUBE GUARD

RESOURCES

You can find installation manuals, settings cards and troubleshooting ideas at www.copperheadag.com





Copperhead Ag PRODUCTS

CLOSING WHEELS

CRUISER2



FURROW
CRUISER



CRUISER
XTREME



SFP
CRUISER



DRILL
CRUISER



FURROW
CRUISER

CRUISER2



© Samsara Inc. Confidential



CRUISER *XTREME*



SFP
CRUISER



DRILL
CRUISER

Questions?





How “Just A Little” Can Help A Lot

Andy Thompson
Regional Sales Manager



Point of No Till

- Conservation
- Decrease inputs
- Soil Health
- Increase Carbon

Strip Till

- My definition: A *farming system that manages residue and provides controlled seedbed preparation to create the ideal seed growing environment in specific zones within a field.*



Principles of Strip Till

IN THE SEED ZONE

- Residue Management
- Uniformity of Seed Zone
- Warming/Drying Evenly at and after planting
- Adequate Moisture
- Good Fertility for Plant Growth

Goals of Seedbed Preparation

- Perfect seed-to-soil contact when planting
- Consistent seedbed
- Good growing environment for plants
- Only do what is necessary





Yetter Strip Freshener

- Provides shallow seedbed preparation right ahead of the planter while also placing nitrogen close to the plant

Benefits of Running Strip Freshener Ahead of Planter

- More consistent seedbed
- Warmer seed zone
- Better residue management
- Easy N placement for seed
- Better planter ride
- Better planter performance



Yetter 2984 Strip Freshener CC

- Inexpensive and easy to operate
- .2 gal fuel/acre
- 10 hp/row
- 10 mph operating speed
- High acres/hour
- In-cab adjustment= easy operation



24 Row Strip Till



Contact Me

Andy Thompson

athompson@yetterco.com

800-447-5777

X @AGandythompson

www.yetterco.com

@YetterFarmEquip

info@yetterco.com



HUMA[®]

The World Leader in Humates



34th Annual
**NATIONAL
NO-TILLAGE
CONFERENCE**

January 6-9, 2026 • St. Louis, Mo.

Huma.US



HUMA[®]

- Founded in 1973
- Huma Reflects Both the Strength & Nurture of Mother Nature
- Dedicated Ourselves to Innovate, Implement, & Improve the use of Humics for Soil Health & Regenerative Agricultural Practices
- Dry Products are Produced in New Mexico & our Liquid Products in Arizona



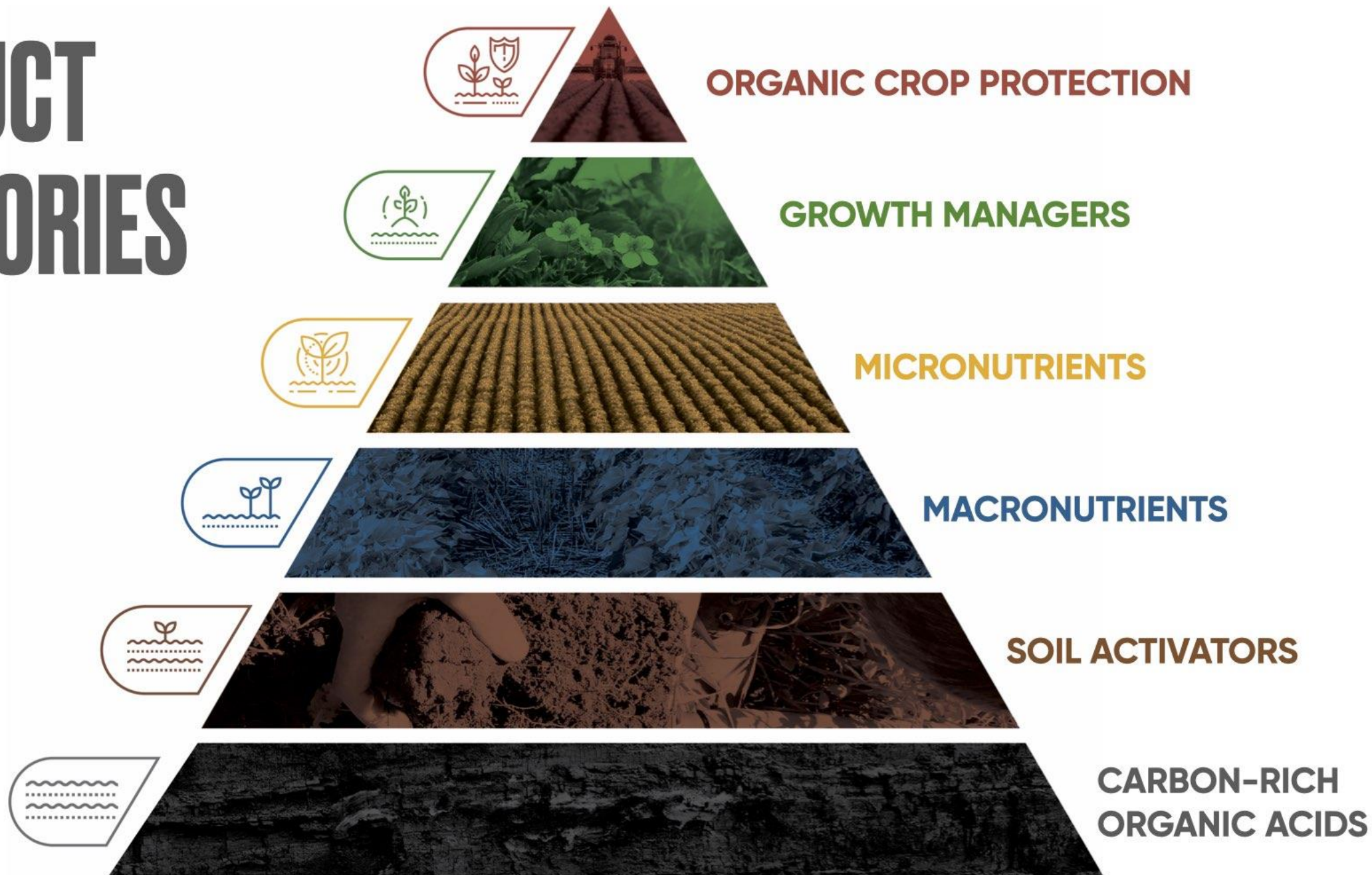
GO TO THE SOURCE

UNEARTHED. UNMATCHED. UNCOMPROMISED.

From our mines to your soil. We control every step of the process. Trusted for over 50 years, Huma[®] harnesses the pure power of nature, to bring you the widest range of dry and liquid humates. All mined and made in the USA. From the finest raw humates to our proprietary Micro Carbon Technology[®]. **QUALITY BEGINS AT THE SOURCE.**



PRODUCT CATEGORIES



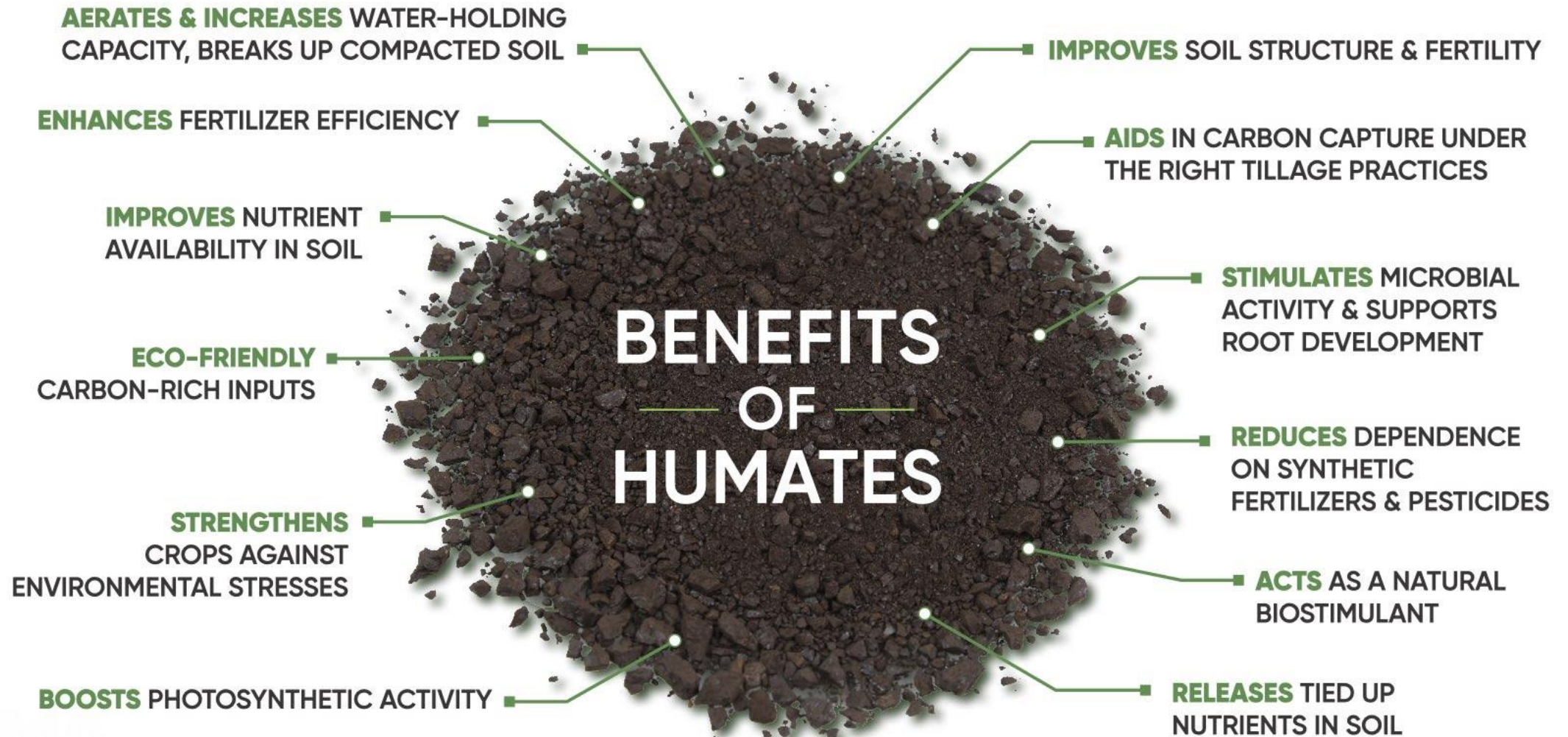
FORMATION OF HUMIC ACIDS



WHAT ARE HUMATES?

- ▶ **Humic substances/Humates** - Carbon-rich materials formed primarily through microbial decomposition of dead plant matter, a process called humification, carried out by bacteria and fungi. Not a specific compound. Groups of Organic Acids- functional groups, carbon benzene rings, etc. A great carrier/chelator.
- ▶ **Dry humates contain all 3 separate categories** - Humic acid, fulvic acid, and humin. All categorized based on their solubility in water in different pHs. Looking at long term sustainability as humates break down.
- ▶ **Liquid Humates** - Extracted typically up to 24% humic acid - Immediately available, foliar benefits, compatibility dependent on pH and other ingredients. The cleaner the solution, the less the Humin fraction.

HUMATES AT-A-GLANCE



CARBON-BASED

Stimulate & Improve
Microbial Populations

Increases Efficiency & Effectiveness
of Fertilizers

Right Place, Right Time,
Right Rate, & Right Source

Leads to Better Quality Soil, Plants, and
Fruit Where Pesticide Use Is Minimal

Plant-Friendly

VS.

SALT-BASED

Degrade & Weaken
Microbial Populations

Bulk Manufactured With
Low-Quality Control

Inefficient Fertilization of Entire Fields

Leads to Soils More Susceptible to
Diseases, Insects, and Increases
Pesticide Dependency

Can Burn Roots



BIOAVAILABILITY

Adding
humic acid to
No-Till Systems
helps build
healthy soils

HUMA



SOIL HEALTH

Adding dry humates to cover crop applications helps build OM

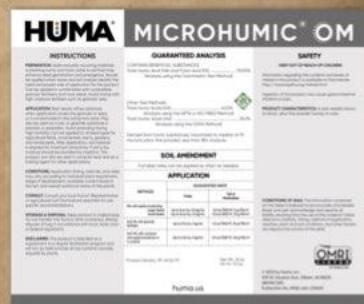


HUMA



BIOAVAILABILITY

MICROHUMIC® OM
provides a
biostimulant & seed
lubricant at half the
cost of graphite/talc



HUMA



SOIL HEALTH

Add ZAP[®] to feed biologicals, stimulate beneficials and control pests



HUMA

ZAP

INSTRUCTIONS

PREPARATION: Shake well before use. Can be applied in conjunction with conventional plant growth regulators, pesticides, or other field fertilizers. If applicability is uncertain, get test or small quantity. Do not apply the product at concentrations greater than 1% without a soil test.

APPLICATION: Designed for soil application to improve soil health. This product supplies bacteria and/or bioinoculants to soil and should be applied when soil conditions favor the most and proper rate of application for this product. Best results will be obtained when application is concentrated in the active root zone. Can be applied to all soil types for agricultural fields, commercial, home, gardens, and landscapes. Soil moisture is required for maximum availability. Apply to dry material should be provided by irrigation. Full label rates can be applied as often as every 10-20 days, as needed.

CONDITIONS: Application timing, intervals, and rates may vary depending on individual soil types, available nutrient levels in the soil, and varied nutrient needs of the plants.

COMBATS: Consult your local Humus Representative or agricultural turf horticulture specialist for use-specific recommendations.

STORAGE & DISPOSAL: Do not store this product where 50° F (10° C) or above (95° F (35° C)) when product is original container. Do not transfer into other and containers. Keep this container tightly sealed for recycling. Always dispose of container in accordance with local, state, and/or federal regulations.

DISCLAIMER: This product is intended to be a supplement to a regular fertilization program and will not, by itself, provide all the nutrients normally required plants.

8-0-0 GUARANTEED ANALYSIS

Total Nitrogen (%)	8.00%
100% Ammoniacal Nitrogen	
100% Nitrate Nitrogen	
100% Urea Nitrogen	
Sulfur (%)	1.00%
100% Combined Sulfur	
Iron (%)	<0.01%
100% Chelated Iron (Fe)	
Manganese (Mn)	0.00%
100% Chelated Manganese (Mn)	
Zinc (Zn)	0.00%
100% Chelated Zinc (Zn)	
Derived from Urea, Ammonium Sulfate, Ammonium Nitrate, Iron HEDTA, Manganese EDTA and Zinc EDTA.	

ALSO CONTAINS BENEFICIAL SUBSTANCES

8.80% Organic Matter (derived from humic substances)

SHAKE WELL BEFORE USE

Do not apply this product in concentrations greater than 1% without a soil test. Full label rates can be applied as often as every 10-20 days, as needed.

APPLICATION

METHOD	Rate (lb)	Rate (kg)	Rate (gallon)	Rate (liter)
As a soil amendment	10-20 lbs/1000 sq ft	4.5-9 kg/1000 sq ft	1-2 gal/1000 sq ft	0.4-0.8 L/1000 sq ft
As a top-dress	10-20 lbs/1000 sq ft	4.5-9 kg/1000 sq ft	1-2 gal/1000 sq ft	0.4-0.8 L/1000 sq ft
As a broadcast	10-20 lbs/1000 sq ft	4.5-9 kg/1000 sq ft	1-2 gal/1000 sq ft	0.4-0.8 L/1000 sq ft
As a fertigation	10-20 lbs/1000 sq ft	4.5-9 kg/1000 sq ft	1-2 gal/1000 sq ft	0.4-0.8 L/1000 sq ft

8-0-0 (8.80% Organic Matter) 100% Urea Nitrogen, 100% Ammoniacal Nitrogen, 100% Nitrate Nitrogen, 100% Urea Nitrogen, 100% Chelated Iron (Fe), 100% Chelated Manganese (Mn), 100% Chelated Zinc (Zn)

humo.us

8-0-0

HUMA



THANK YOU

HUMA[®]

The World Leader in Humates

Huma.US

Saddle Butte Ag, Bio Till cover crops



Who is Saddle Butte / Bio Till

- Started in Oregon
- Family run business
- Has a farm that grows cover crops seed
- Has two seed cleaning plants in the Willamette valley
- Has 3 warehouse in the Midwest with 4 reps
- Has a good website
- <https://www.biotill.com/>



This is where the seed comes from

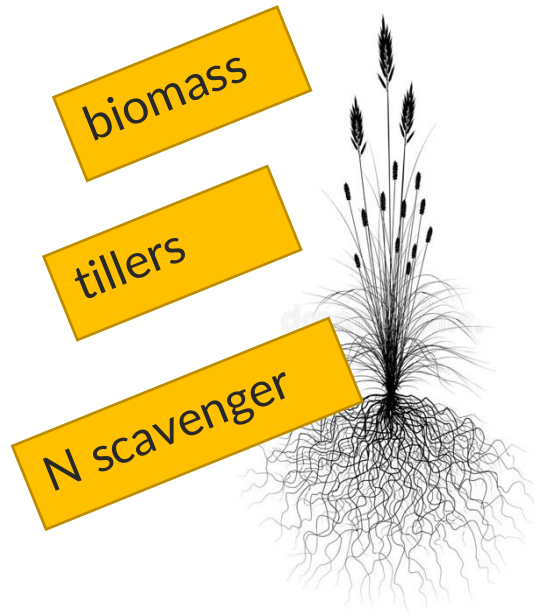


MIDWEST



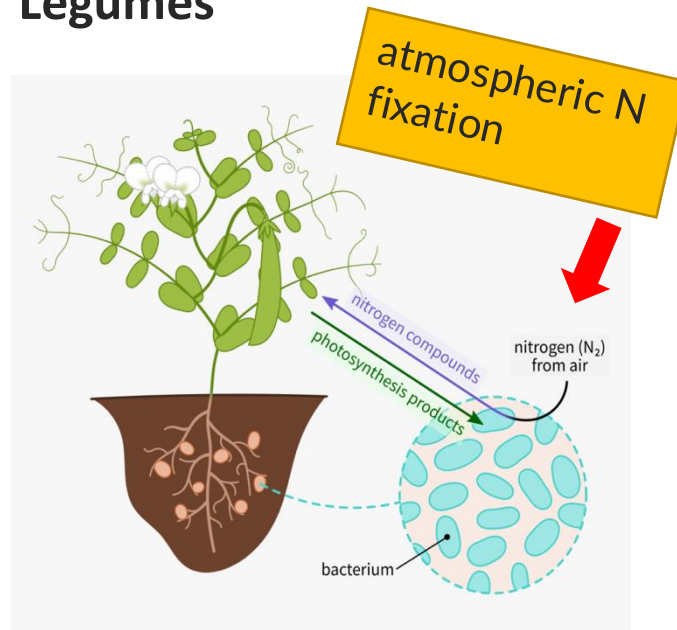
Different Types of Cover Crop Species

Grasses



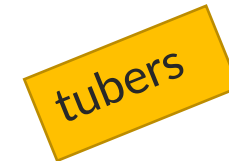
- cereal rye
- oat
- triticale
- wheat
- barley
- Bounty annual ryegrass

Legumes



- field pea
- clovers
- common vetch
- hairy vetch
- cowpea

Brassicas



- radish
- turnip
- winter camelina
- canola (rapeseed)
- shield mustard
- Bayou Kale

Bio till and forage 360

- The 2 Brands that our company run under
- Full line of cover crops
- Full line of grasses
- Full line of forage crops





UGA1391030







Reason to work with Saddle Butte

- Raise a lot of our own seed or contract grow our products
- Clean all of our seed in Oregon at our cleaning plants
- Small grains from seed company's in the northern Midwest or Canada
- Education is very important to success
- Well managed / educated farm operations using cover crops tend to high success rates.
- We are conducting several research plots to understand cover crops better in multiple cropping and forage systems, so our customer can be the most profitable

New Ideas coming to Saddle Butte

- Short winter rye and winter triticale
- Short spring barley
- Exploring the idea of regen seed certification
- Looking at new seed ideas
- Using drones with more species earlier in the season

Thank you

- Please stop by our booth
- Ask questions