



# **FERROXX<sup>®</sup>**

**SLUG AND SNAIL BAIT**

**NO TILL SLUG CONTROL**



# FERROXX<sup>®</sup>

SLUG AND SNAIL BAIT

---

## PROBLEM:

- Slug problems are usually associated with heavy crop residue which holds moisture
- They feed on seedlings, crop residue, and cover crops
- There is currently no economic threshold based on slug numbers or feeding damage
- Can require partial or complete replanting of fields



**FERROXX**  
SLUG AND SNAIL BAIT

---

## SLUG/SNAIL ACTIVITY:

- Nocturnal – mostly feed at night
- Difficult to locate during the day and even in low winds
- Early morning is the best time to monitor populations
- Scouting is important
- Will seek out shade and moisture



# FERROXX<sup>®</sup>

SLUG AND SNAIL BAIT

---

## CROP DAMAGE:

- Slugs are capable of feeding on leaf tissue throughout the growing season
- Slowing early growth can lead significant crop damage
- No-tilled fields are impacted the most severely



**FERROXX**  
SLUG AND SNAIL BAIT

---

## CROP DAMAGE IN CORN:





**FERROXX**  
SLUG AND SNAIL BAIT

---

## HOW TO MINIMIZE SLUG/SNAIL DAMAGE:

- Use a cover crop to provide an alternate food source
- Delaying planting until plant growth is more rapid improves the chances that soybeans will outgrow potential damage

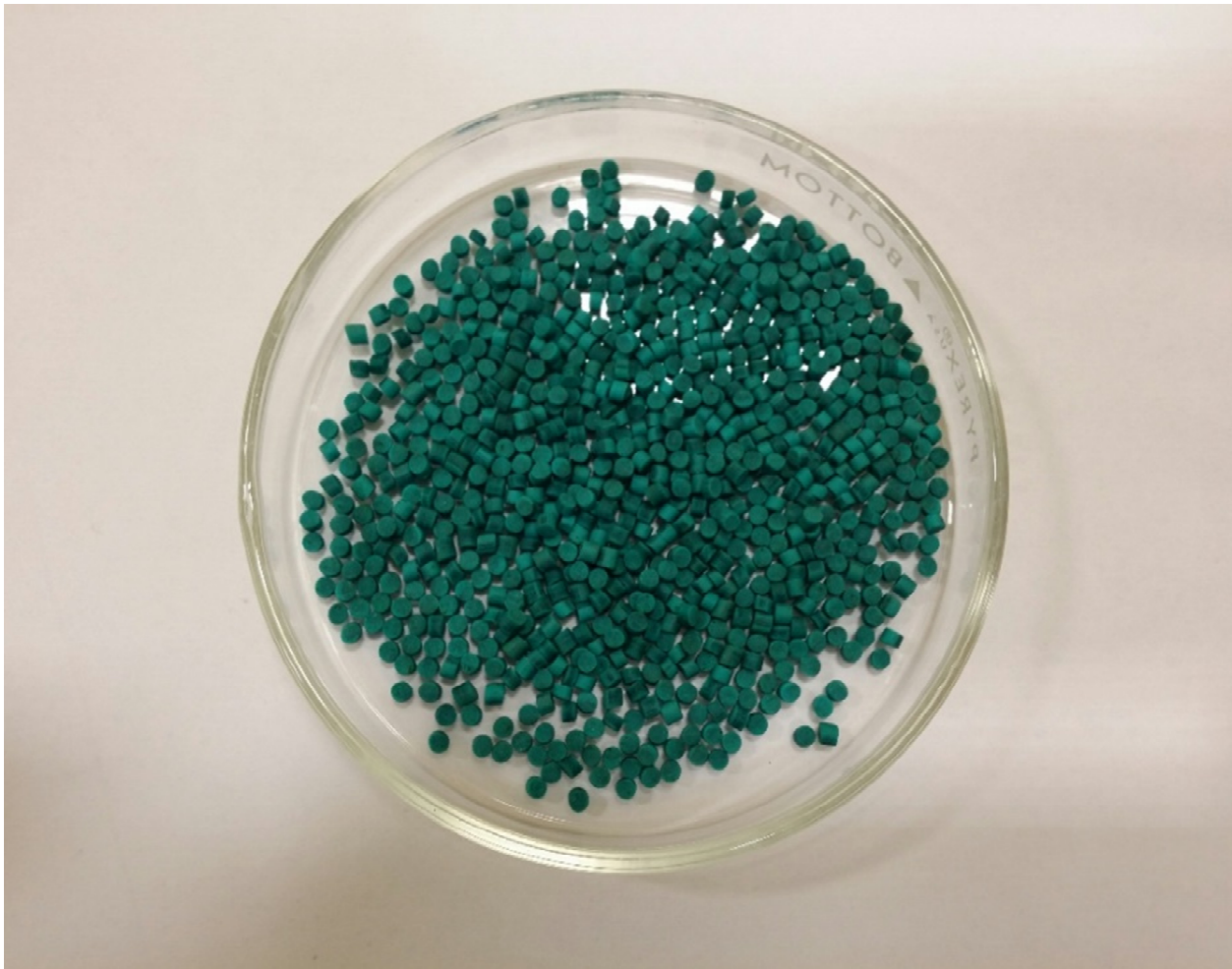
- **FERROXX**  
SLUG AND SNAIL BAIT



# FERROXX<sup>®</sup>

SLUG AND SNAIL BAIT

---





# FERROXX<sup>®</sup>

SLUG AND SNAIL BAIT

---

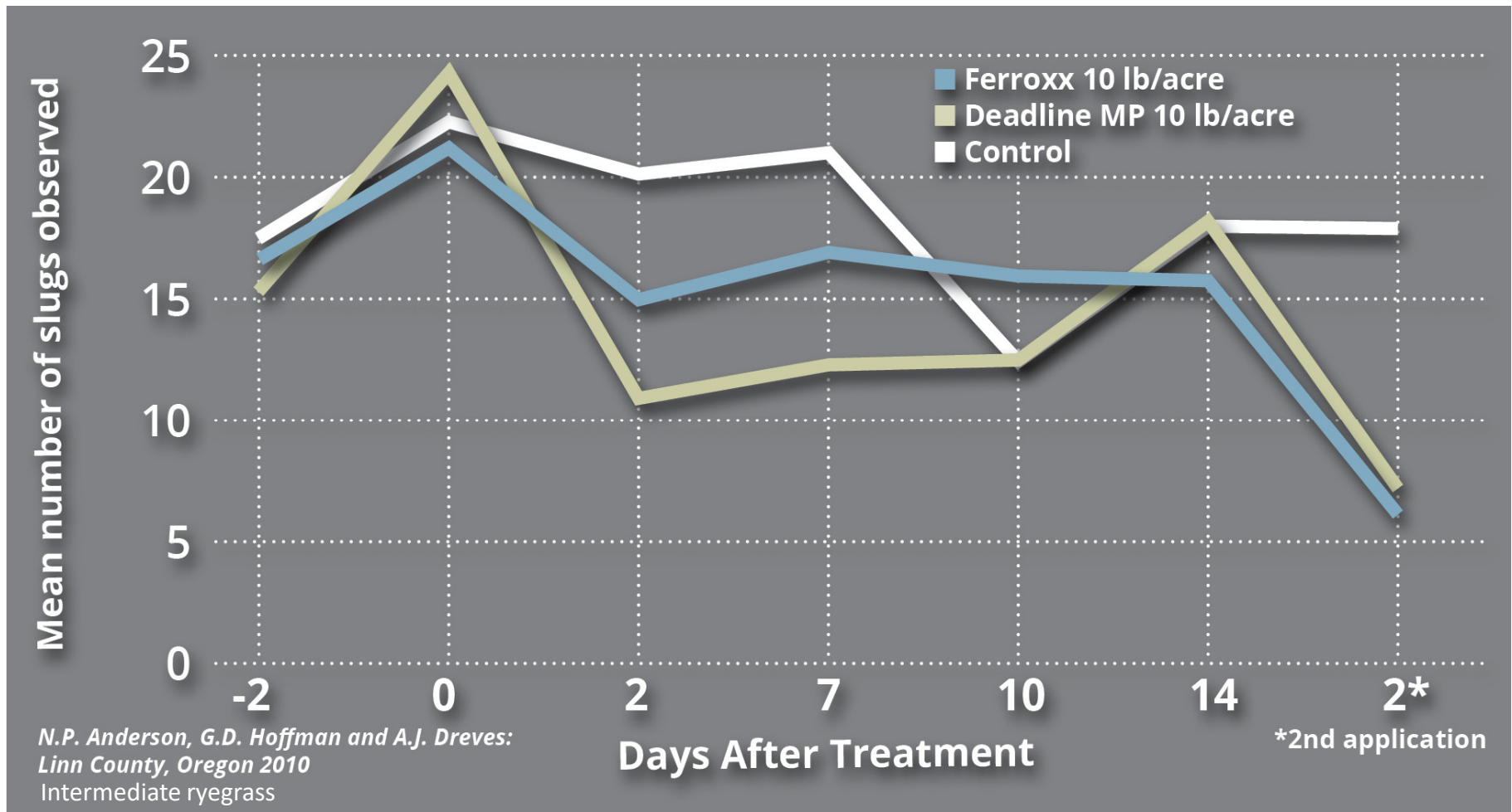
## LABEL SUMMARY:

- 5% iron EDTA active ingredient
- Use sites: All crops
- Rate: 5 - 20 lbs./acre
- Zero hour Reentry Interval and zero day Pre-harvest interval
- No MAX # OF APPS/YEAR
- Can be used in areas where pet and wildlife protection is a concern



# FERROXX<sup>®</sup>

SLUG AND SNAIL BAIT

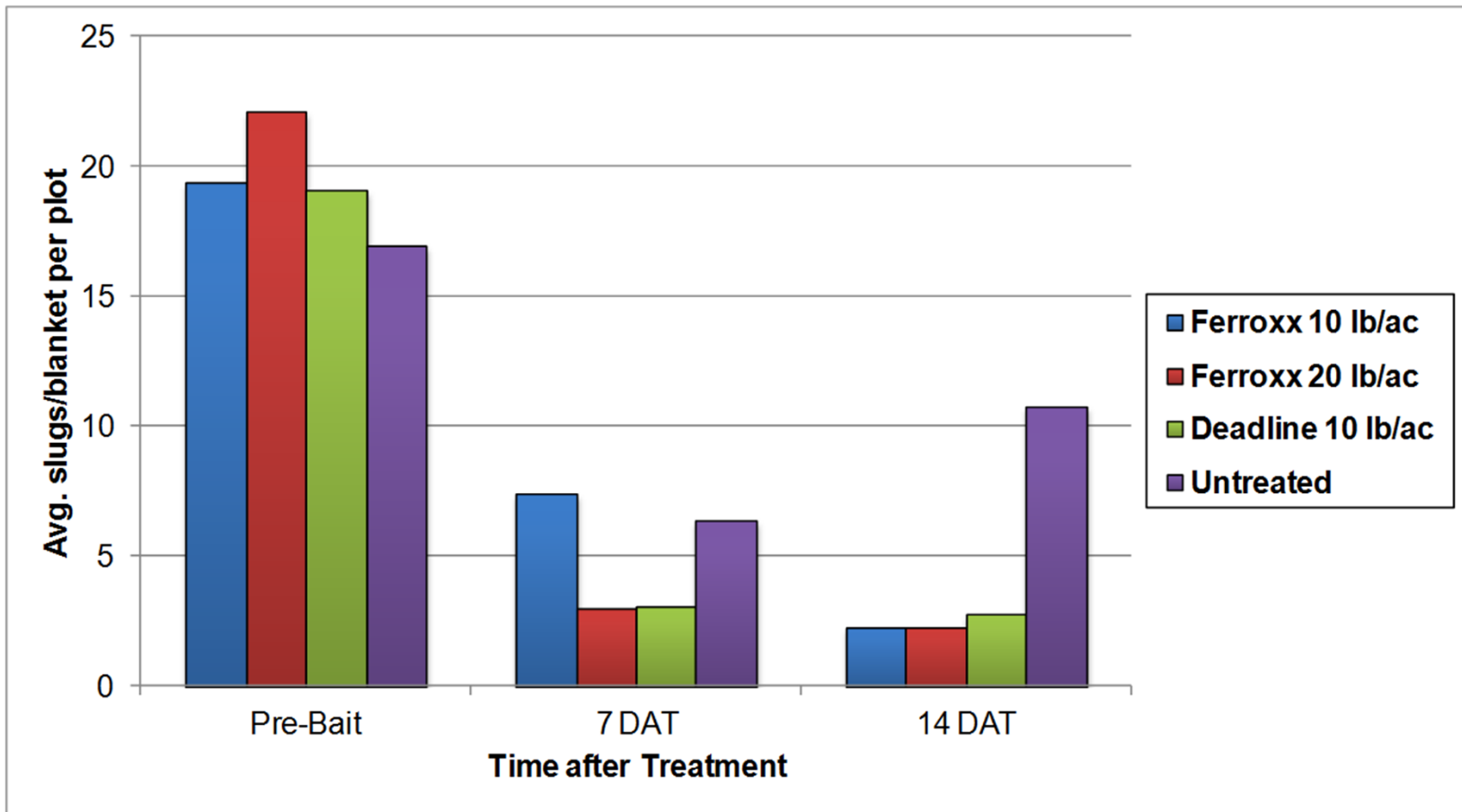




# FERROXX<sup>®</sup>

SLUG AND SNAIL BAIT

Slug control in no-till red clover - Nicole Anderson, Nov. 2011, OSU, WA County





# **FERROXX**<sup>®</sup>

SLUG AND SNAIL BAIT

---

## **MODE OF ACTION:**

- Ingested molluscicide-non reversible
- Kills by intoxication, not dehydration
- Snails and slugs are very sensitive to iron
- Immediately inhibits feeding once ingested
- Kills within 1 day
- Directly replaces metaldehyde
- No slime trails



# FERROXX<sup>®</sup>

SLUG AND SNAIL BAIT

---

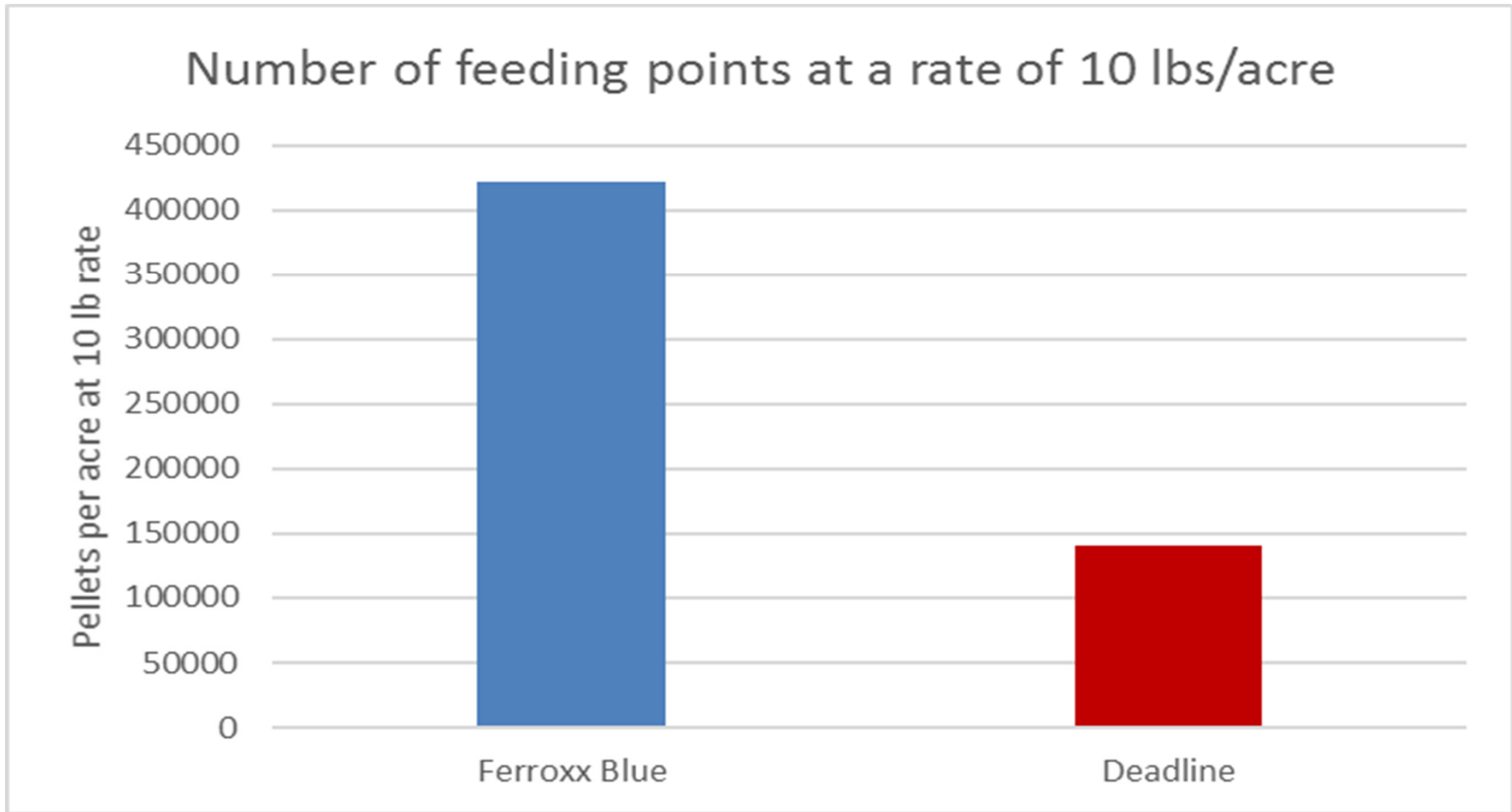
## ADVANTAGES:

- Micropellet™ technology delivers better coverage and uniform distribution
- 3 times as many pellets per pound compared to competitor
  - This will ensure slugs are more likely to find the bait



# FERROXX<sup>®</sup>

SLUG AND SNAIL BAIT





# FERROXX<sup>®</sup>

SLUG AND SNAIL BAIT

---

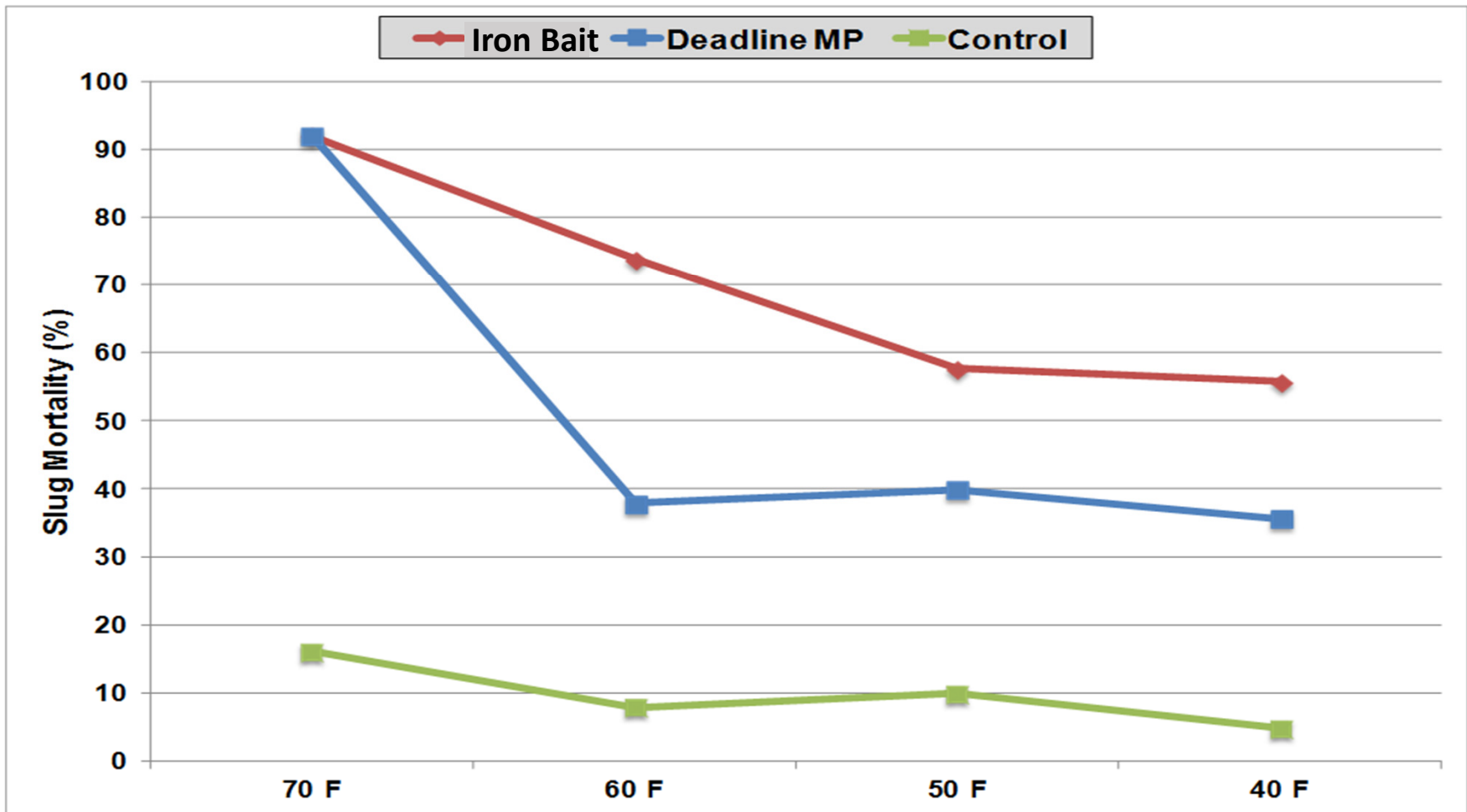
## ADVANTAGES:

- Shelf life of 5+ years
- Rainfast formula provides superior activity in moist conditions
- Will not harm earthworms
- Iron-based baits retain greater efficacy than metaldehyde at low temperatures



# FERROXX<sup>®</sup>

SLUG AND SNAIL BAIT





# **FERROXX**<sup>®</sup>

SLUG AND SNAIL BAIT

---

## **ADVANTAGES:**

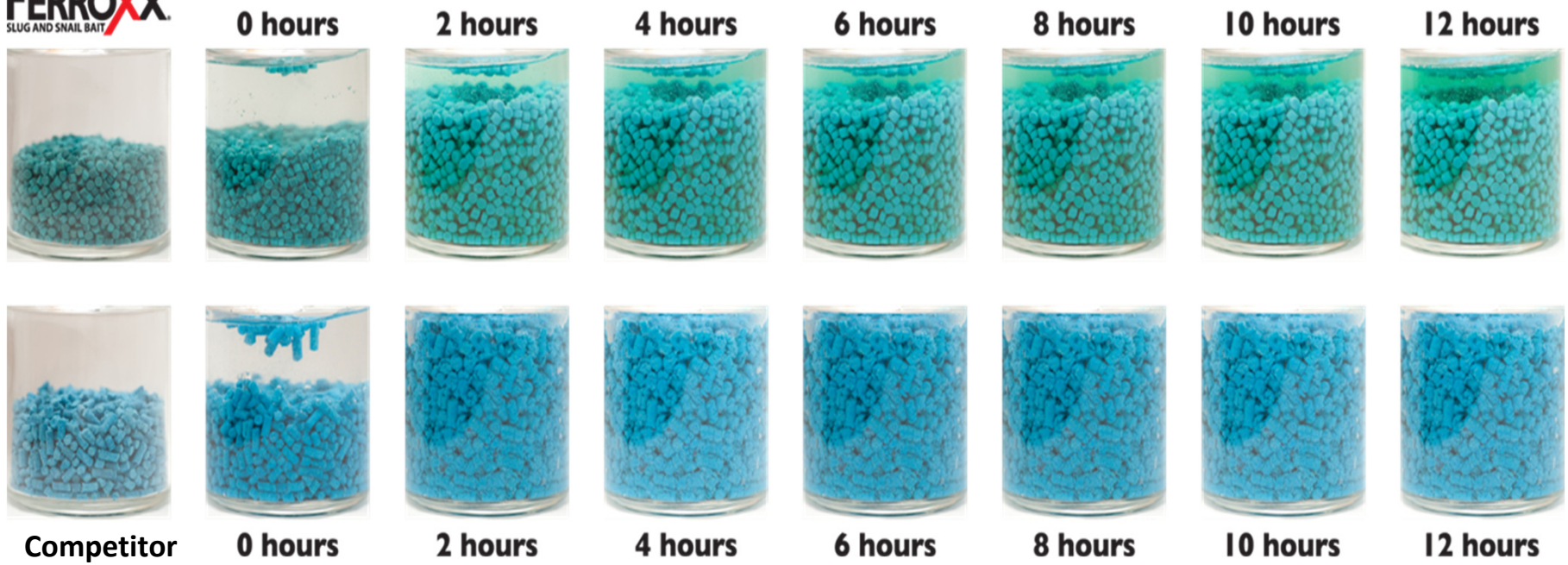
- Can be used around pets and wildlife
- Easily blends with granular fertilizer
- Can be applied by ground or air
- Long-lasting and resistant to rain and watering



# FERROXX<sup>®</sup>

SLUG AND SNAIL BAIT

FERROXX<sup>®</sup>  
SLUG AND SNAIL BAIT



**Even when submerged in water, Ferroxx holds up while the competitor pellets dissolve**



# **FERROXXX<sup>®</sup>**

**SLUG AND SNAIL BAIT**

**NO TILL SLUG CONTROL**



---

## Questions? Comments?

Eric Maurer

[eric.maurer@neudorff.com](mailto:eric.maurer@neudorff.com)

443-221-3732